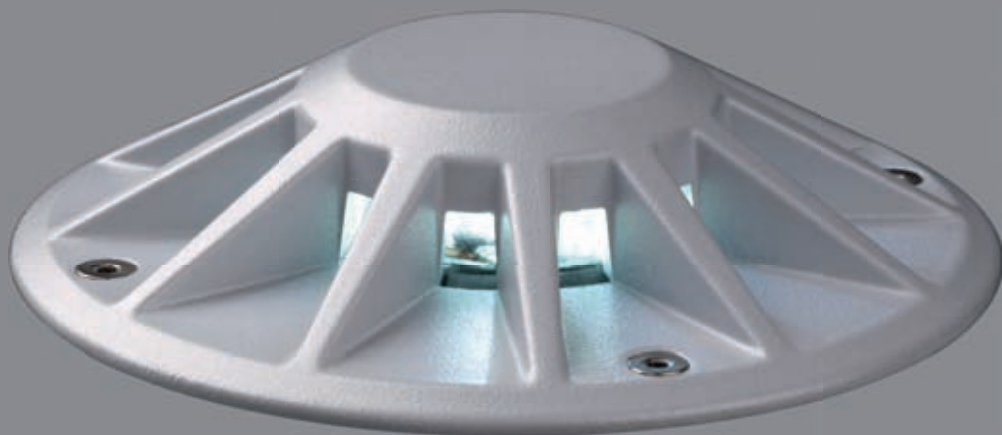
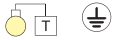


Olodum mini cover AL



# Olodum mini cover AL

IK 10  
IP 67



H07RN-F  
H07RN-F

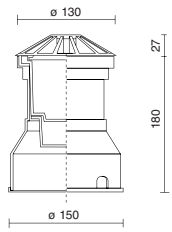
Carico statico 2000 kg  
Static load 2000 kg

Velocità max carrabilità 5 km/h  
Drive-over max speed 5 km/h

- Corpo e calotta in pressofusione di alluminio.
- Doppia verniciatura in polveri poliestere con pretrattamento speciale per esterni.
- Uscita luce mono-bi-radiale.
- Diffusore in vetro stampato.
- Cassaforma di contenimento in PA.
- Pressacavo in ottone nichelato PG11.



- Body and cover made of die-cast aluminium.
- Double powder coated painting with outdoor special treatment.
- Mono-bi-radial light diffusion.
- Printed glass diffuser.
- Housing made of PA.
- PG11 cable gland of nickel plated brass.



|  |                                                                                                                                      |   |   |  |
|--|--------------------------------------------------------------------------------------------------------------------------------------|---|---|--|
|  | Versione mono emissione con powered / Powered mono emission version<br>Gr ○ <b>E8396/LBI</b> 1x2W 500mA<br>Gr ● <b>E8396/LBL</b>     | • | • |  |
|  | Versione doppia emissione con powered / Powered double emission version<br>Gr ○ <b>E8397/LBI</b> 1x2W 500mA<br>Gr ● <b>E8397/LBL</b> | • | • |  |
|  | Versione radiale con powered / Powered radial version<br>Gr ○ <b>E8398/LBI</b> 1x2W 500mA<br>Gr ● <b>E8398/LBL</b>                   | • | • |  |

OP. ....TSC TORX Viti di sicurezza / Safety screws