

CDM-R

**3000K**  
**Ra=1b**

35W= 8500cd  
70W= 15000cd

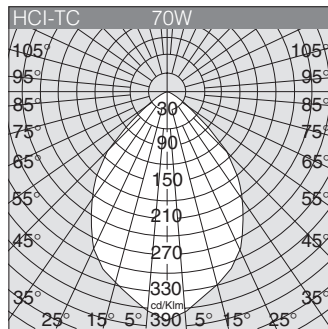
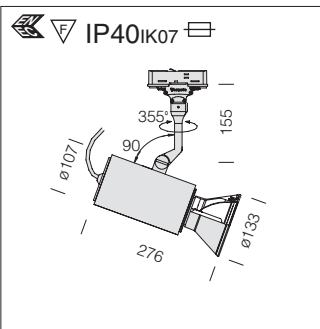
35W = 24°  
70W = 42°

A2

**Vision C+M short version**

				CELL-F	
GX8,5	35	CDM-R111	2,0	m. silver	<b>700574</b>
GX8,5	35	CDM-R111	2,0	black	<b>700534</b>
GX8,5	35	CDM-R111	2,0	white	<b>700514</b>
GX8,5	70	CDM-R111	2,0	m. silver	<b>700578</b>
GX8,5	70	CDM-R111	2,0	black	<b>700538</b>
GX8,5	70	CDM-R111	2,0	white	<b>700518</b>

Supplied with electronic gear and CDM-R111 lamp.  
CDM-R lamps are designed for decorative illumination and expositions. The energy consumption and heat production are reduced by at least 66%. Lamps life is up to 4 times more than using a halogen lamp (11000h average life).



HCI-TC

**3000K**

35W= 3300lm  
70W= 6400lm

38

UV STOP

A2

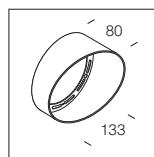
**Vision C+M short version**

				CELL-F	
G8,5	35	HCI-TC	1,9	m. silver	<b>700576</b>
G8,5	35	HCI-TC	1,9	black	<b>700536</b>
G8,5	35	HCI-TC	1,9	white	<b>700516</b>
G8,5	70	HCI-TC	1,9	m. silver	<b>700577</b>
G8,5	70	HCI-TC	1,9	black	<b>700537</b>
G8,5	70	HCI-TC	1,9	white	<b>700517</b>

Supplied with electronic gear and lamp POWERBALL HCI-T.

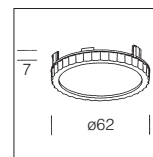
**Conveyor**

black **5861**  
For B+M/A+M/C-M version.



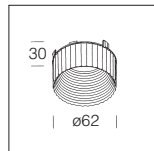
**Special filter x DICR**

Fabrics	<b>5889</b>
Crystal Shop	<b>5890</b>
<b>Coloured filter</b>	
Blue	<b>5896</b>
Red	<b>5897</b>
Yellow	<b>5898</b>
Green	<b>5899</b>



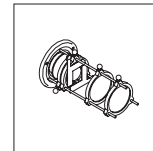
**Conveyor**

black **5864**  
For F+N/G+N/H+N/D+N/E+N version.



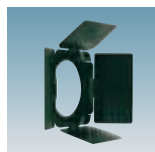
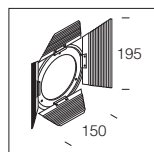
**Shaper for DICR**

black **5860**  
For DICR lamps.



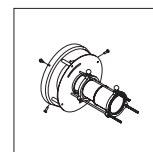
**Anti-glare shutter**

black **5865**  
For F+N/G+N/H+N/D+N/E+N version.



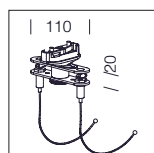
**Shaper with small lens**

black **5862**  
For F+N, G+N, H+N, D+N, E+N versions.  
Max 70 W



**Susp. attachment x powered tracks**

silver **91475**  
white **91415**  
To be used for D+N, E+N version with a bracket.



**Shaper with big lens**

black **5863**  
For D+N, E+N versions with a bracket.

