

**Housing:** fibreglass nylon with stainless steel AISI 316 frame.

**Diffuser:** tempered glass, resistant to impact and thermal shock.

**Reflector:** symmetric and asymmetric version.

**Electric gear:** 12V-50Hz power supply with external transformer acc.179.

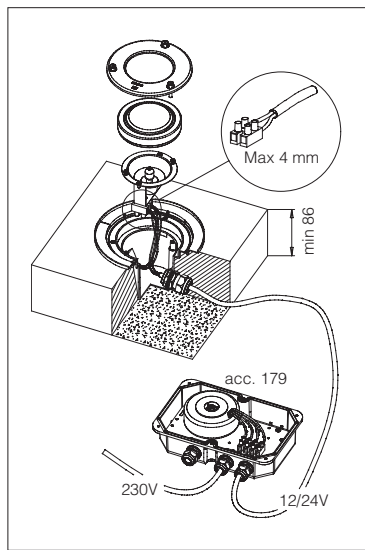
**Equipment:** silicone rubber.

		S+L		temperature and load				
wattage	colour	weight	code	T. max on glass		max kg load	can be trodden on	trafficable
				ta 25°C	ta 15°C			
<b>ALO 20</b>	s. steel	0.40	530750-00	95°C	85°C	2000	OK	

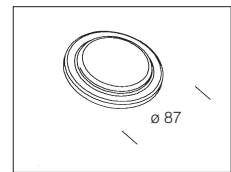
ALO 20 (12V) low tension=320lm

		S+L		temperature and load				
wattage	colour	weight	code	T. max on glass		max kg load	can be trodden on	trafficable
				ta 25°C	ta 15°C			
<b>DICR 20 ALU</b>	s. steel	0.40	530760-00	100°C	90°C	2000	OK	
<b>ALO 20</b>	s. steel	0.40	530761-00	95°C	85°C	2000	OK	

ALO 20 (12V) low tension=320lm - DICR 20 ALU 36°=700 cd

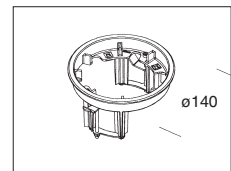


acc. 201 - coloured glass	
red	990108
blue	990109
green	990110



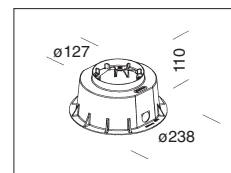
acc. 314 - frame	
	993926

To install Microfloor into walls



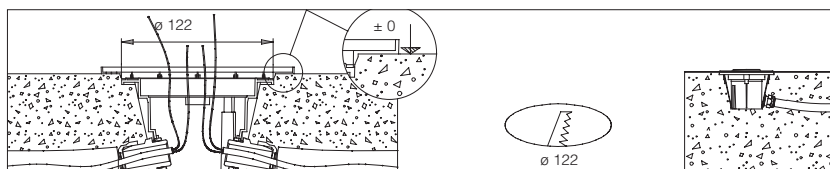
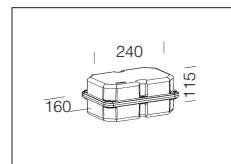
acc. 313 - outer shell	
	993925

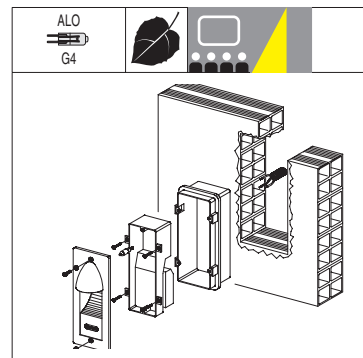
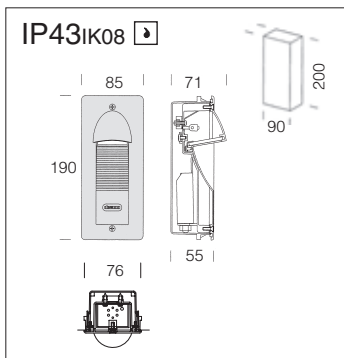
To install Microfloor into the ground.



		CT		
wattage	colour	weight	code	
<b>60 W</b>	black	2.00	997661-00	transformer for <b>max 3 fixtures</b>
<b>105 W</b>	black	2.00	997662-00	transformer for <b>max 6 fixtures</b>

Nylon watertight box. Containing the electro-mechanic transformer and terminal block.





**Housing/frame:** in die-cast aluminium.

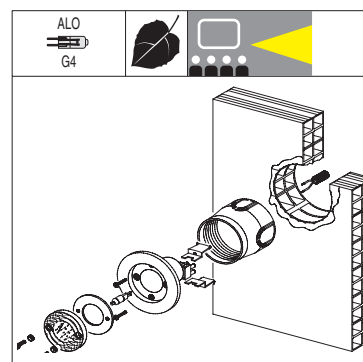
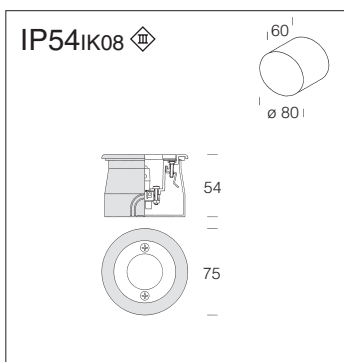
**Diffuser:** in tempered glass, thermal shock and impact resistant.

**Coating:** in several stages. First stage: epoxy cationic electrocoating, resistant to corrosive and saline environments. Second stage: UV-stabiliser priming, and final stage rough finish with metallic silver acrylic coating(it has passed the UNI ISO 9227 1000 hr test).

**Electric gear:** 12V/50Hz power supply with transformer.

**Equipment:** silicone rubber.

1619 Mini - rectangular wall version				
		CTL		Lamps
wattage	colour	weight	code	
ALO 20	m. silver	0.50	530673-00	ALO 20 low tension (12 V) - 320Cd
Version includes built-in transformer.				



**Housing/frame:** in die-cast aluminium.

**Diffuser:** in tempered glass, thermal shock and impact resistant.

**Coating:** in several stages. First stage: epoxy cationic electrocoating, resistant to corrosive and saline environments. Second stage: UV-stabiliser priming, and final stage rough finish with metallic silver acrylic coating(it has passed the UNI ISO 9227 1000 hr test).

**Electric gear:** 12V/50Hz power supply with transformer.

**Equipment:** silicone rubber and EPDM gasket.

1618 Mini - wall version				
		S+L		Lamps
wattage	colour	weight	code	
ALO 10	m. silver	0.10	530670-00	ALO 10 low tension (12 V) - 320Cd - 110lm
ALO 20	m. silver	0.10	530671-00	ALO 20 low tension (12 V) - 320Cd - 110lm
Separate transformer required.				

