



High quality standard, versatility and original lighting solutions make Capri a comprehensive urban décor product. Available in three versions: Capri 1, with clear glass, suitable for parks and roads, Capri 2, with matt glass, designed for residential areas, and Capri 3, for bicycle pathways. Capri offers additional applications thanks to the edge of its coloured glass that is used to characterise lit areas or to create luminous paths.

Housing: Die-cast aluminium.

Diffuser: 5mm thick tempered glass, thermal shock and impact resistant (UNI12150-1 : 2001 tests: 2001) with coloured edge.

Coating: Graphite grey and sandblasted silver polyester powder, for better resistance to corrosion and saline environments.

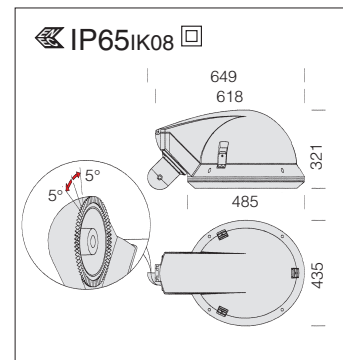
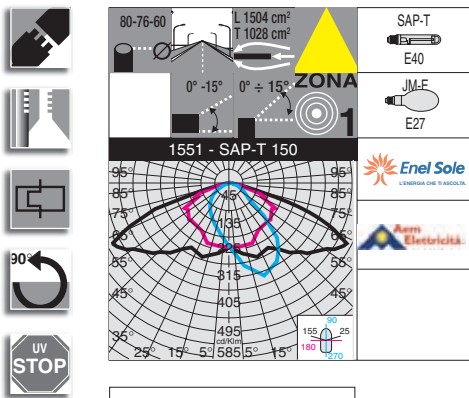
Electric gear: 230V/50Hz power supply with thermal protection. Flexible wire terminated with admiralty brass quick-connection clamps; 1.0sqmm cross-section silicone insulation. 2P terminal block with maximum allowed lead cross-section of 2.5 sqmm.

Equipment: Wall or Ø60/76/80 pole mounting unit. Swivelling, with an adjustment system to be used with acc. 155/156. The supplied knife switch allows technicians to cut off the utility line in case of maintenance.



Coloured versions available on request, surcharge applicable.

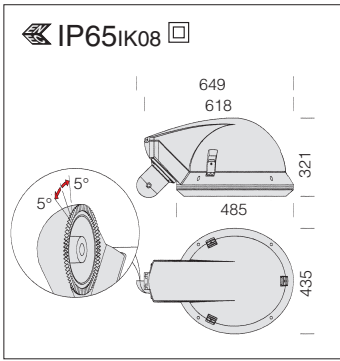
Available RAL colours: 1018/3003/5011/9010



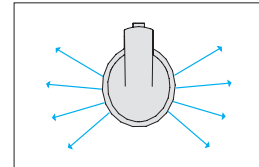
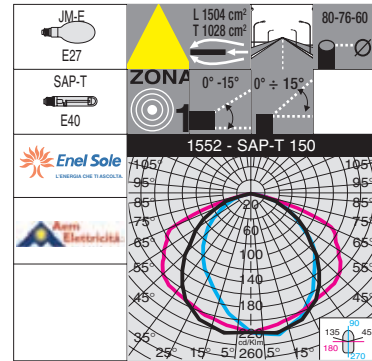
Optic unit: LIGHT POLLUTION PREVENTING OPTICAL SYSTEM. In pressed 99.85 aluminium, anodically oxidized, 3 µ thick, polished.

1551 Capri 1 - clear glass				
		CNRL		Lamps (Ta=25°C)
wattage	colour	weight	code	Kelvin - ølm - Ra
JM-E 150	sil. + yellow	16.00	422620-00	4000 K - 14000 lm - Ra 1a
JM-E 150	sil. + bluee	16.00	422621-00	4000 K - 14000 lm - Ra 1a
JM-E 150	sil. + red	16.00	422622-00	4000 K - 14000 lm - Ra 1a
SAP-T 150	sil. + yellow	16.00	422623-00	2000 K - 15000 lm - Ra 4
SAP-T 150	sil. + bluee	16.00	422624-00	2000 K - 15000 lm - Ra 4

Grey graphite housing and sand-silver cover. Always use with acc. 155 or 156.

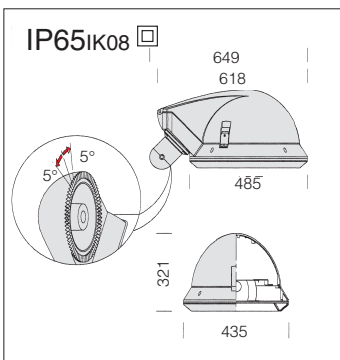


Optic unit: LIGHT POLLUTION PREVENTING OPTICAL SYSTEM. In pressed 99.85 aluminium, anodically oxidized, 3 μ thick, polished.

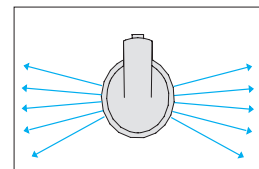
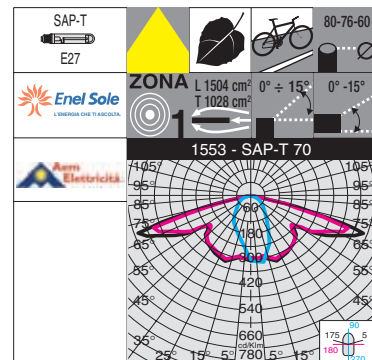


1552 Capri 2 - matt glass				
		CNRL		Lamps (Ta=25°C)
wattage	colour	weight	code	Kelvin - olm - Ra
JM-E 150	sil. + yellow	16.00	422720-00	4000K - 14000lm - Ra 1a
JM-E 150	sil. + blue	16.00	422721-00	4000K - 14000lm - Ra 1a
JM-E 150	sil. + red	16.00	422722-00	4000K - 14000lm - Ra 1a
SAP-T150	sil. + yellow	16.00	422723-00	2000K - 15000lm - Ra 4
SAP-T150	sil. + blue	16.00	422724-00	2000K - 15000lm - Ra 4

Matt glass for residential areas. Grey graphite housing and sand-silver cover. Always use with acc. 155 or 156.



Optics for bicycle pathways: LIGHT POLLUTION PREVENTING OPTICAL SYSTEM. In polished aluminium.

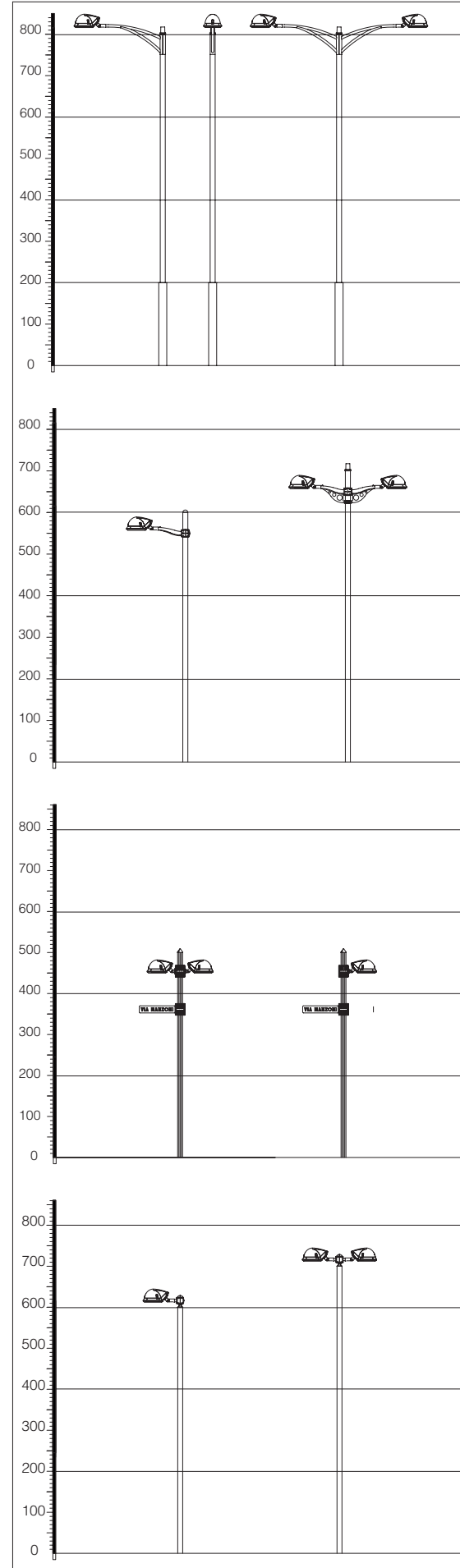


1553 Capri 3 - for bicycle pathways				
		CNRL		Lamps (Ta=25°C)
wattage	colour	weight	code	Kelvin - olm - Ra
SAP-T 70	sil. + yellow	16.00	422750-00	2000K - 6000lm - Ra 4
SAP-T 70	sil. + blue	16.00	422751-00	2000K - 6000lm - Ra 4

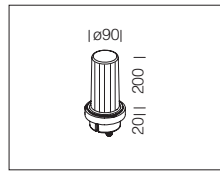
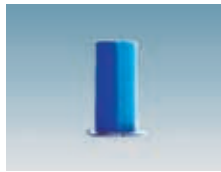
Grey graphite housing and sand-silver cover. Always use with acc. 155 or 156.

Lighting results: 1553 Capri								
Flux	Disp.	S	H	L	D	I	Em	Ug
6500	Uni.	0	5	2,5	30	0°	18,0	0,4

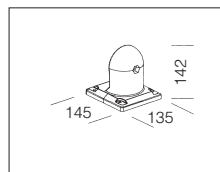
Lm = medium Luminance
 Uo = general Uniformity
 Ul = longitudinal Uniformity
 TI% = debilitating glare



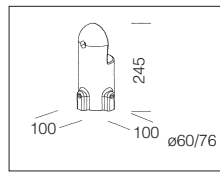
acc. 450 LED head	
LED white	991395
LED blue	991395-71
Die-cast aluminium connection. To be installed on pole to give an aesthetic finish $\varnothing 120$.	



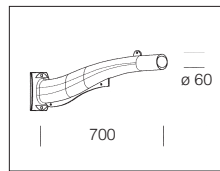
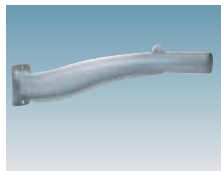
acc. 156 wall mounting unit	
graphite	991364
silver	991384
To be used when installing Capri on walls or Lione cubes. With anti-slide rack. Adjustable mounting unit.	



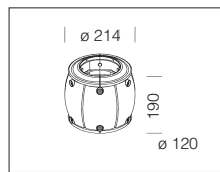
acc. 155 pole connect.	
graphite	991362
silver	991382
To be used when installing Capri on pole $\varnothing 60$ with acc. 208 or $\varnothing 76$ with acc. 130. Adjustable mounting unit.	



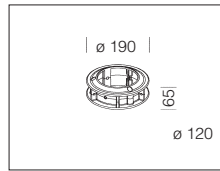
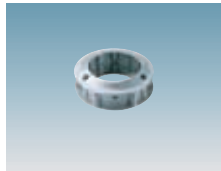
acc. 210 Sector arm	
s. silver	426950
graphite	426951
Made of aluminium. To be used with acc. 211 or 300 for pole mounting.	



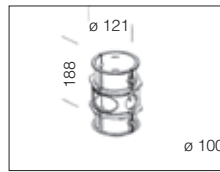
acc. 211 Sector connect.	
s. silver	426952
graphite	426953
Made of aluminium. To be used with acc. 210 for $\varnothing 120$ pole mounting.	



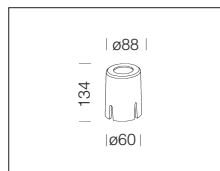
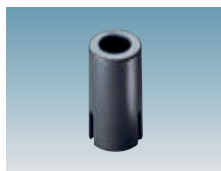
acc. 212 ring	
s. silver	426954
graphite	426955
Made of aluminium. To be used with acc. 214/215 for $\varnothing 120$ pole mounting.	

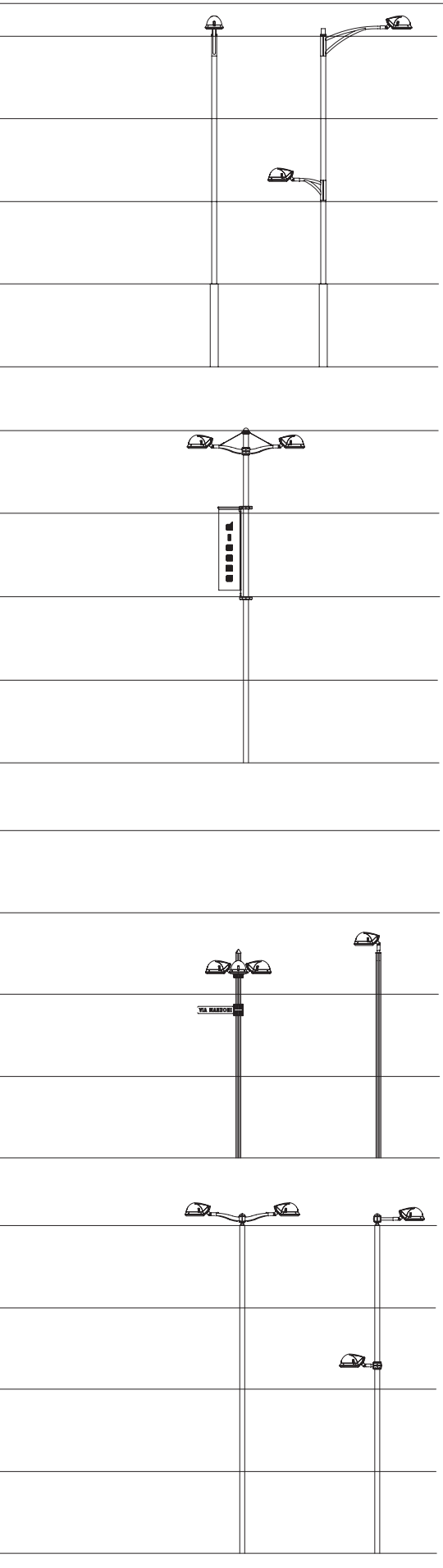


acc. 217 connector adapter	
s. silver	426962
graphite	426963
Use with acc. 211 for installation on $\varnothing 100$ poles.	

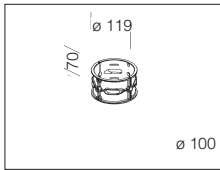
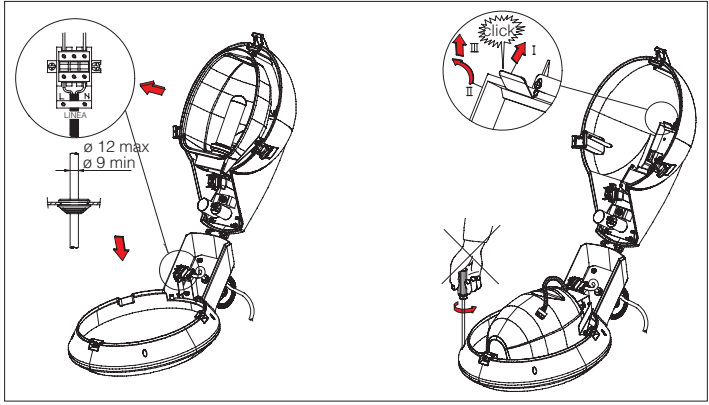


acc. 208 pole adapter $\varnothing 60$	
grey	991242
Made of aluminium. To be used for Capri pole installation $\varnothing 60$.	

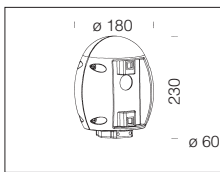




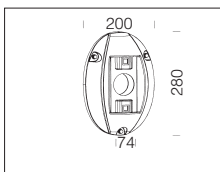
Knife switch supplied. Allows technicians to cut off the utility line in case of maintenance.



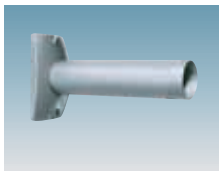
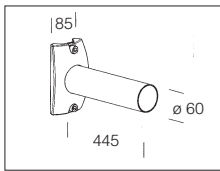
acc. 218 ring adapter	
s. silver	426964
graphite	426965
Use with acc. 212/213 for the pole installation $\varnothing 100$.	



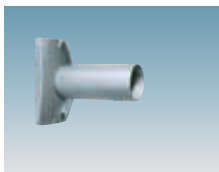
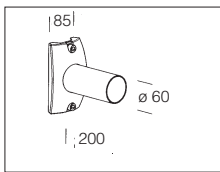
acc. 300 Oliva	
s. silver	426970
graphite	426971
In aluminium. For the pole arms installation $\varnothing 60$ acc. 210 or 301.	



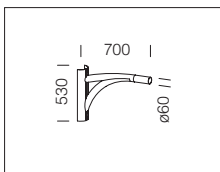
acc. 302 wall mounting bracket	
s. silver	426974
graphite	426975
In aluminium. For the arm wall installation acc. 210 or 301.	



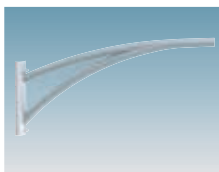
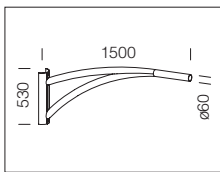
acc. 328 wall arm	
silver	426944
graphite	426945
Made of die-cast aluminium. To be used with acc. 302 for wall mounting.	



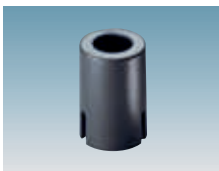
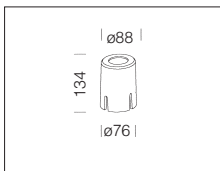
acc. 327 wall arm	
silver	426942
graphite	426943
Made of die-cast aluminium. To be used with acc. 302 for wall mounting.	



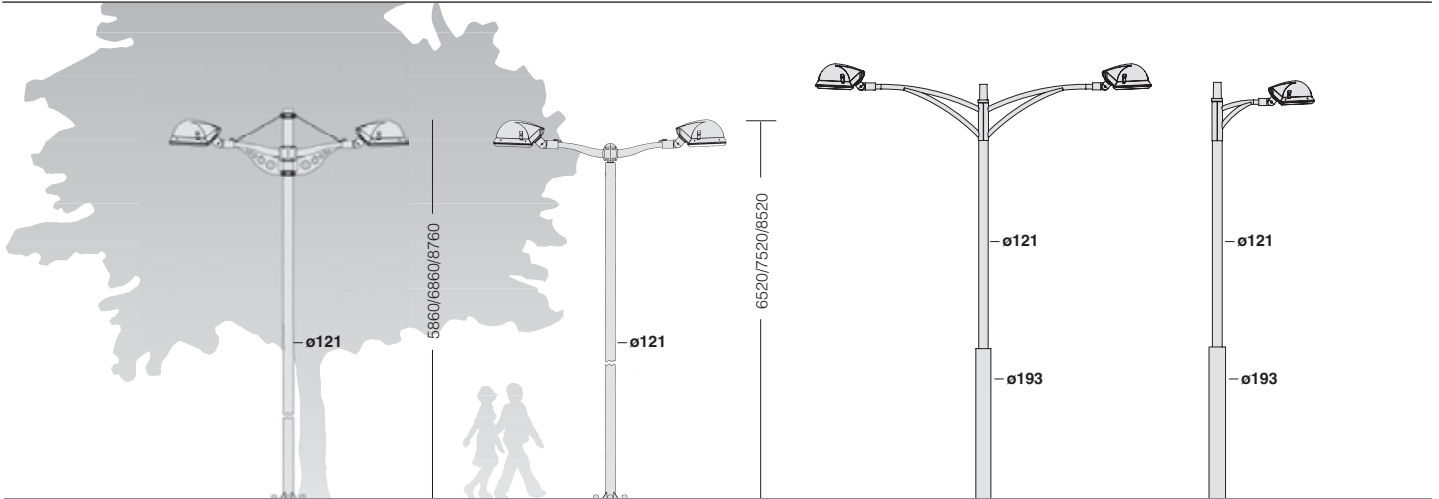
acc. 406 Aliante arm	
s. silver	991387
In steel. Permits the pole application of art. 1475/1476.	



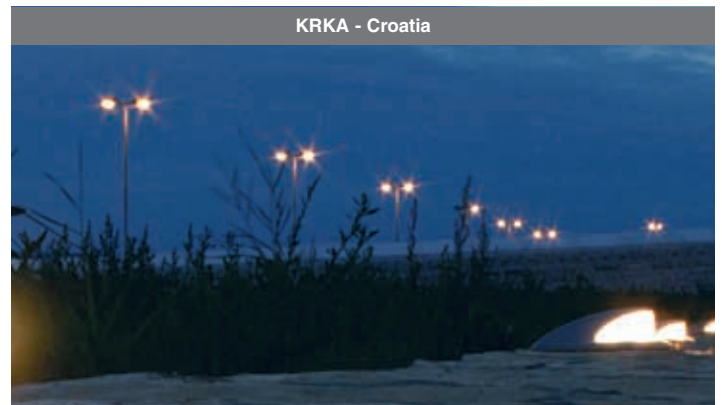
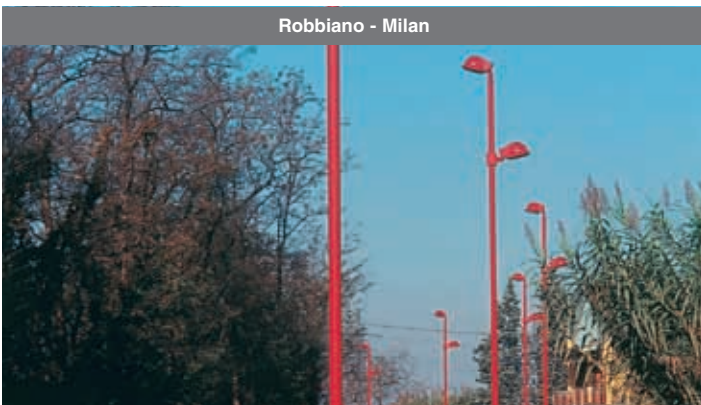
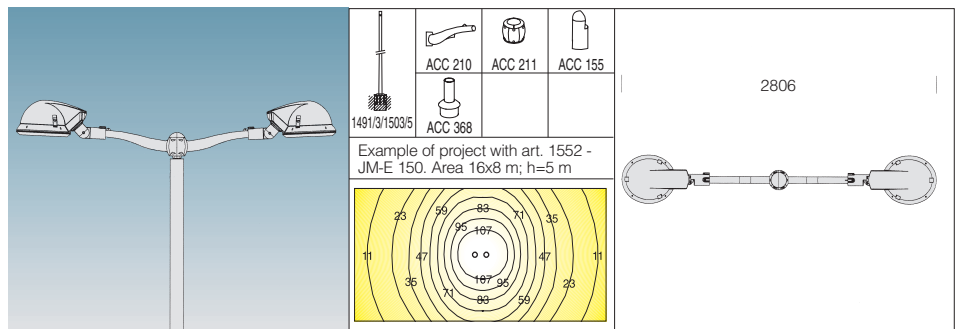
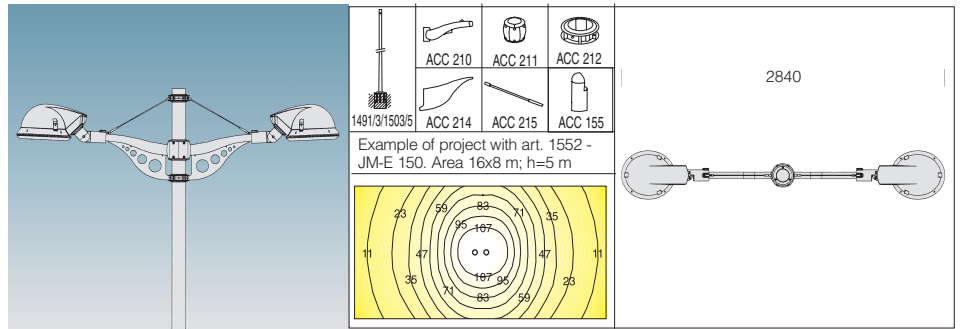
acc. 407 Aliante arm	
s. silver	991389
In steel. Permits the pole application of art. 1475/1476.	

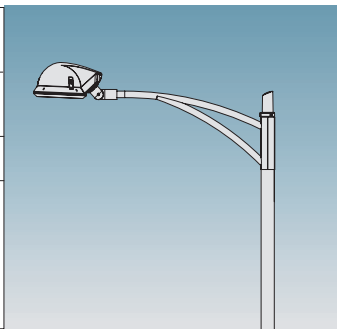
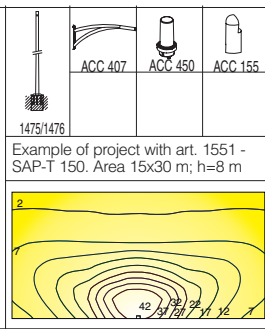
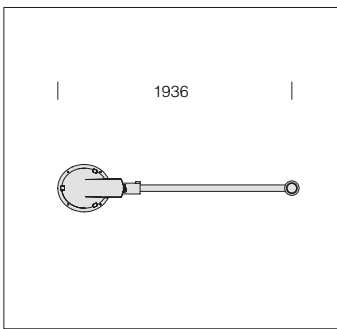
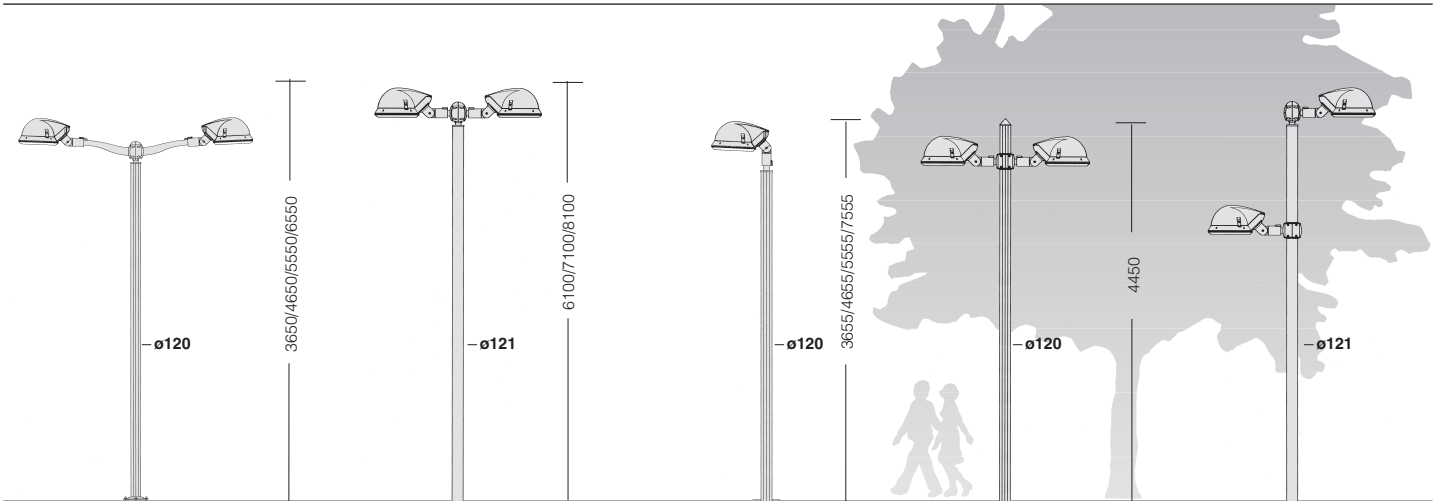


acc. 130 pole adapter $\varnothing 76$	
0,50	991230
In aluminium. To be used for pole fixture application $\varnothing 76$.	

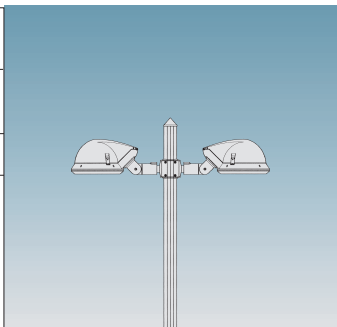
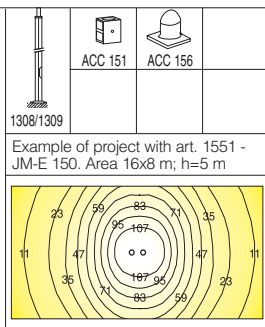
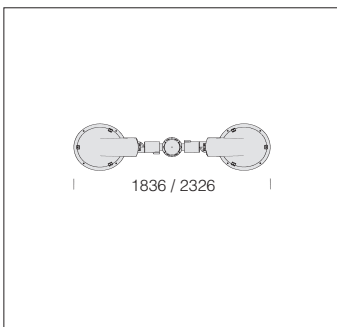


ES. ac95 - 2 Capri	
Components:	
2 Capri	
1 pole to be chosen between acc.1491/93/1503/1505*	
2 Sector arm acc. 210	426950/51
1 Sector connect. acc. 211	426952/53
1 ring acc. 212	426954/55
2 connect. acc. 214	426958/59
2 tie-rod acc. 215	426960
2 pole connect. acc. 155	991362/82
* pole height can be specified as desired.	
ES. ac96 - 2 Capri	
Components:	
2 Capri	
1 pole to be chosen between acc.1491/93/1503/1505*	
1 acc. 368	426996
2 Sector arm acc. 210	426952/53
1 Oliva connect. acc. 300	426970/71
2 pole connect. acc. 155	991362/82
* pole height can be specified as desired.	



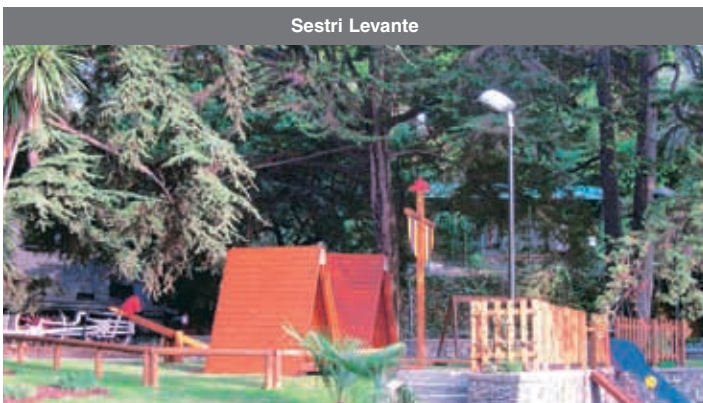


ES. ac90 - 1 Capri	
Components:	
1 Capri	
1 pole to be chosen between acc.1475/1476*	
1 connect. acc. 155	991362/82
1 LED head acc. 450	991395
1 arm acc. 407	991389/90
* pole height can be specified as desired.	



ES. b91 - 2 Capri	
Components:	
1 Capri	
1 pole to be chosen between acc.1308/1309*	
2 Sector connect. acc. 211	426952/53
2 attachments acc. 327	426942/43
2 pole attachments acc. 155	991362/82
* pole height can be specified as desired.	

POST-TOP AMENITIES



Sestri Levante



Milan