

Marostica (Vicenza) - Italy



Housing: In die-cast aluminium.

Cover: Single-piece die-cast aluminium; hinge opening with die-cast aluminium fastening and a safety device to prevent any accidental opening.

Reflector: LIGHT POLLUTION-CONTROL LOUVRE. In anodised, polished, pressed 99.85 aluminium.

Coating: Graphite grey polyester housing; grey cover (resistant to corrosive and saline environments).

Electric gear: 230V/50Hz power supply. Silicone wired terminated with quick connect clamps in admiralty brass, fibreglass braid, 1.0 sqmm cross-section. 2P terminal block with maximum allowed lead cross section of 2.5 sqmm.

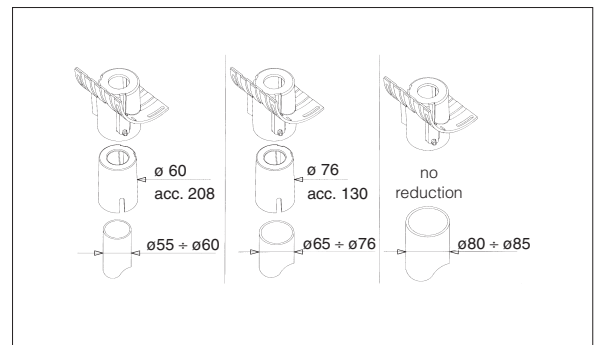
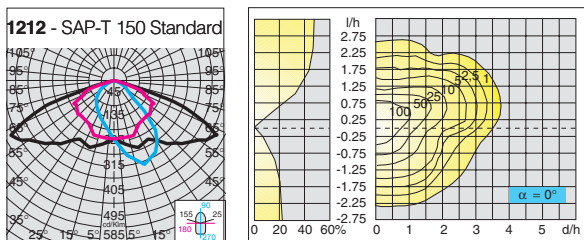
Standard supply: Electric gear on a removable tray with quick connectors for line and lampholder connection. Equipped with anti-condensation filter. Option to install a photocell. Standard with pole unit adapter Ø 60.

Equipment: During maintenance the cover stays attached by means of a device that prevents accidental closing. Environment-friendly gasket. Rotating attachment with protractor scale to adjust the housing. Standard-supply knife switch.

On request: fixtures with remote-control and remote management system, plus power reduction

Lighting results: Aprica 1												
Source	Position	Flux	Disp.	S	H	L	D	I	Lm	Uo	UI	TI%
SAP-T100	X=3,5 Y=1	10000	Uni.	0	7	7	26	0°	1,01	0,42	0,64	7,9
SAP-T150	X=4 Y=1	17200	Uni.	0	8	8	30	0°	1,34	0,43	0,66	8,8
SAP-T150	X=4 Y=1	17200	Uni.	0	8	8	26	0°	1,53	0,42	0,76	8
SAP-T250	X=2 Y=1	33000	Uni.	0	10	10	38	0°	1,59	0,42	0,71	9,8

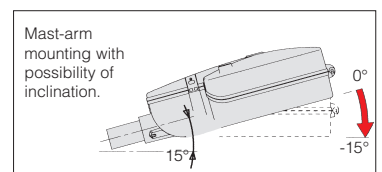
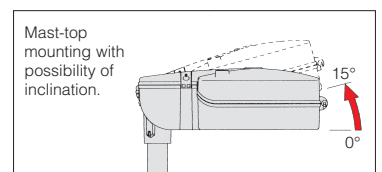
LIGHT-POLLUTION PREVENTING OPTIC:
Ideal for installation in **Zone 1** (UNI10619) with the appropriate angle.
Lm = medium Luminance
Uo = general Uniformity
UI = Longitudinal Uniformity
TI% = debilitating glare

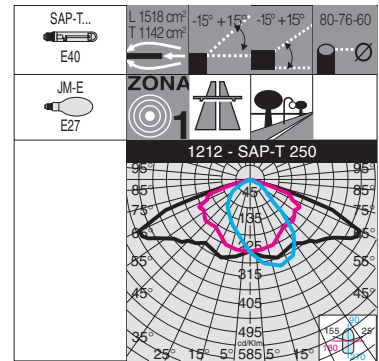
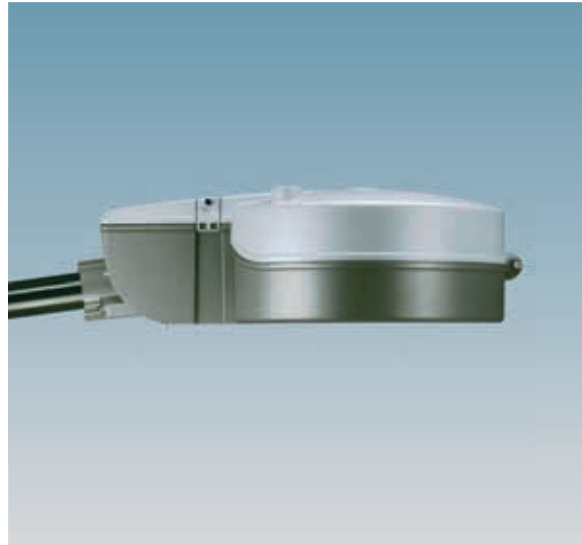
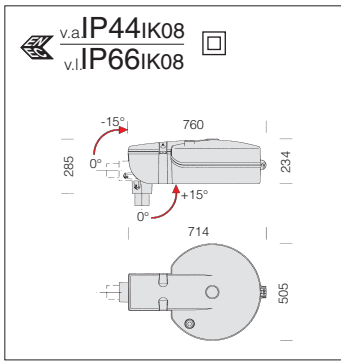


Reflector mounted on fixture housing, equipped with bayonet coupling lampholder base and anti-condensation filter. Equipped with quick connector for line and lampholder connection. Standard-supply knife switch to cut off the power supply automatically during maintenance.



Other colours available on request.

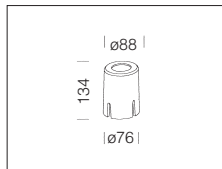




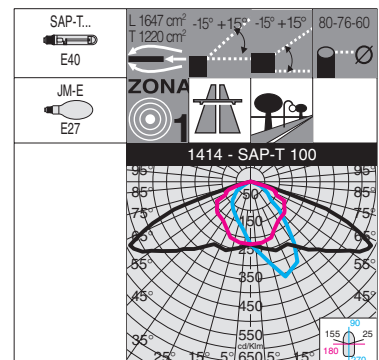
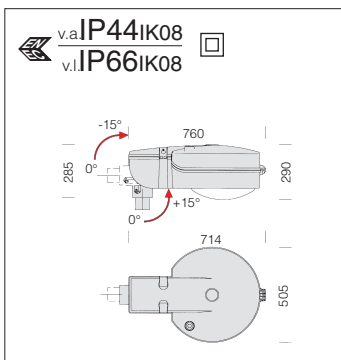
Diffuser: tempered glass, 5 mm thick, thermal shock and impact resistant (UNI12150-1: 2001 tests: 2001)

1212 Aprica 1 - glass diffuser

		CNR		CNRL		CNR - bipower version		Lamps (Ta=25°C)
wattage	colour	weight	code	weight	code	weight	code	Kelvin - olm - Ra
SAP-T 100	silv.+grap.	14.00	313863-00			14.00	313863-30	
SAP-T 150	silv.+grap.	14.30	313864-00			14.30	313864-30	
SAP-T 250	silv.+grap.	15.80	313865-00			15.80	313865-30	
JM-E 100	silv.+grap.			14.00	313866-00			4000K - 9000lm
JM-E 150	silv.+grap.			14.00	313867-00			4000K - 14000lm



acc. 130 pole reduction Ø76
 0,50 | 991230
 In aluminium. To be used to apply the fixture on a Ø 76 pole.



Diffuser: pressed tempered and prismatic glass.

1412 Aprica 1 - prismatic glass diffuser

		CNR		CNRL		CNR - bipower version		Lamps (Ta=25°C)
wattage	colour	weight	code	weight	code	weight	code	Kelvin - olm - Ra
SAP-T 100	silv.+grap.	14.20	313973-00			14.20	313973-30	
SAP-T 150	silv.+grap.	15.40	313974-00			15.40	313974-30	
SAP-T 250	silv.+grap.	16.30	313975-00			16.30	313975-30	
JM-E 100	silv.+grap.			14.20	313976-00			4000K - 9000lm
JM-E 150	silv.+grap.			14.20	313977-00			4000K - 14000lm

