

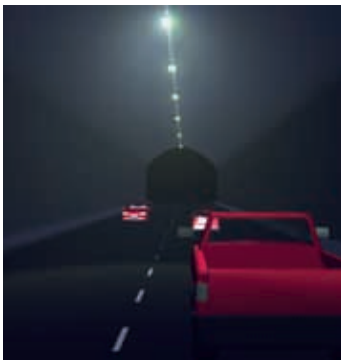


**Housing:** Drawn stainless sheet steel (AISI 316 L, thickness 8/10).

**Diffuser:** Tempered glass 5 mm thermal shock and impact resistant.

**Equipment:** The glass is silicone-sealed onto the housing. Fibreglass nylon cable gland, Ø 1/2 gas. Retained stainless steel screws with special anticorrosion, anti-gripping treatment. Thermally isolated water-tight control gear box.

**Standard supply:** Equipped with an air-circulation valve. During maintenance the lampholder cup stays attached by a safety steel cord. With or snap-on system.

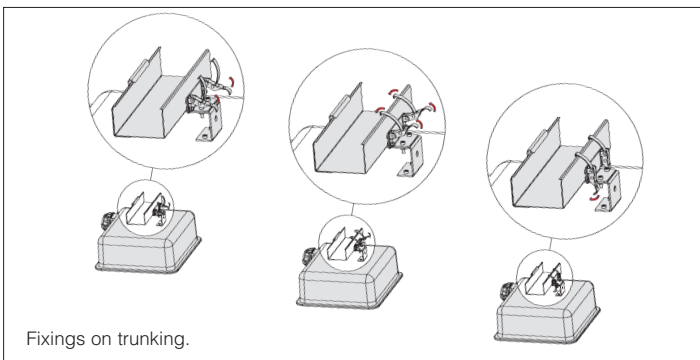


**Counter-flow lighting**

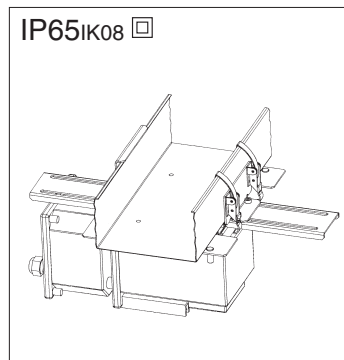
In the counter-flow lighting technique, the lighting fixture is aimed in the direction opposite to the flow of traffic. This helps observers to perceive the objects on the roadway as vividly highlighted against the background. Additionally, aiming the lighting fixture mostly towards observers results in higher luminous efficacy on the roadway.



Art. 1715/1716 complete with quick fixings for steel trunking.



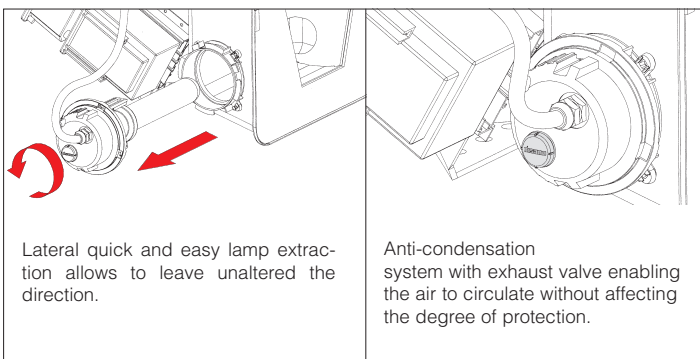
Fixings on trunking.



IP65IK08 □

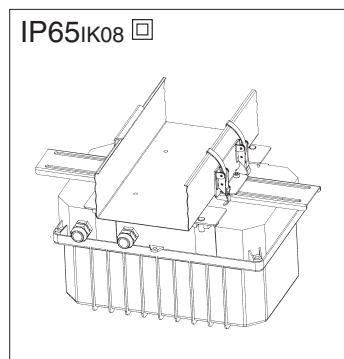
**1174 gear box for Boro**

<b>SAP-T 100</b>	997610
<b>SAP-T 150</b>	997611
<b>SAP-T 250</b>	997612
<b>SAP-T 400</b>	997613



Lateral quick and easy lamp extraction allows to leave unaltered the direction.

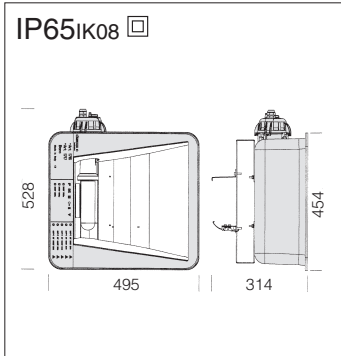
Anti-condensation system with exhaust valve enabling the air to circulate without affecting the degree of protection.



IP65IK08 □

**1205 gear box for Boro**

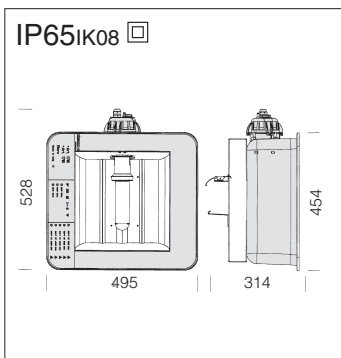
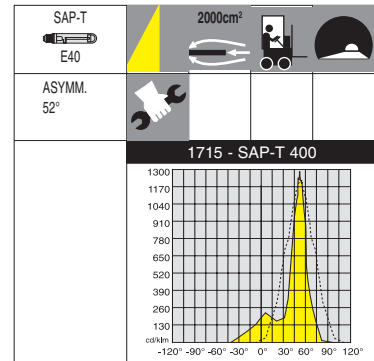
<b>SAP-T 100</b>	997620
<b>SAP-T 150</b>	997621
<b>SAP-T 250</b>	997622
<b>SAP-T 400</b>	997623



**Reflector:** asymmetric; 99.85 anodised and polished aluminium.



1715 Boro - asymmetric counter-beam			
		S	
wattage	colour	weight	code
SAP-T 100/400	stainless steel	8.10	412752-00



**Reflector:** symmetric; 99.85 anodised and polished hammered aluminium.



1716 Boro - symmetric			
		S	
wattage	colour	weight	code
SAP-T 100/400	stainless steel	8.10	412762-00

