

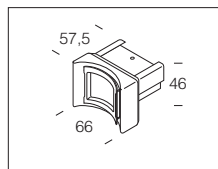
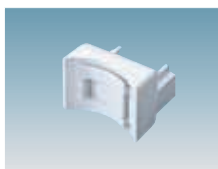
Track housing: painted rolled steel with rounded edges for hand safety and galvanised steel previously stove-enamelled with a UV-stabilised, anti-yellowing white polyester resin applied after phosphate treatment.

Track accessories: In steel with thermoplastic cover, for rotation, junction, suspension or fixing of all Disano fixtures.

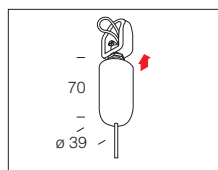
6000 Rapid system - track			
		S	
measure	colour	weight	code
3260	white	3.25	132900
4700	white	4.70	132923

Designed to be quickly attached to the Rapid System series luminaires.

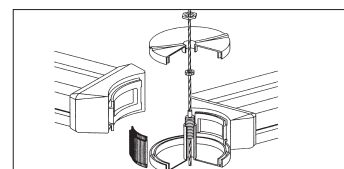
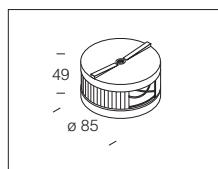
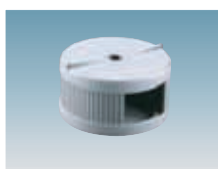
acc. 6019 round joint end cap	
white	132926
In die-cast aluminium. To be used with acc 6018.	



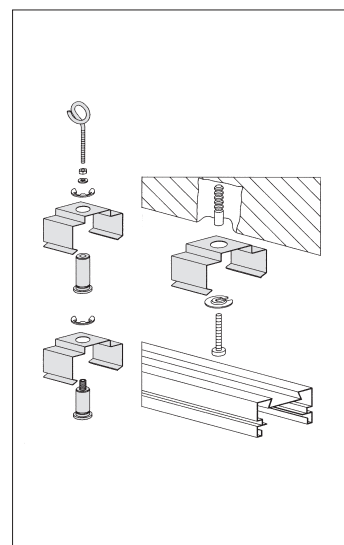
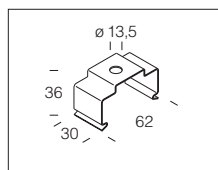
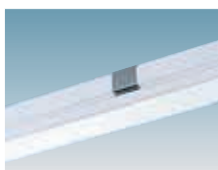
acc. 6510 suspension	
white	993914
Suspension supplied with Ø 2 mm steel wire, 1.5 m long. Max load: 30 kg. To suspend acc 6018.	



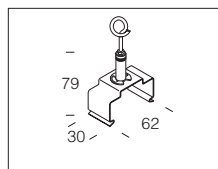
acc. 6018 round joint	
white	132925
Can be used for suspension either by Ø 13 rods or by cable acc 6510, or as a rotating connection (from 90° to 270°) between mo-dules. To be used with acc 6019.	



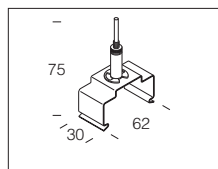
acc. 6051 ceiling / suspension connection	
stainless steel	132927
In steel. For direct ceiling mounting or suspension with rods. At least 2 pcs. per track.	

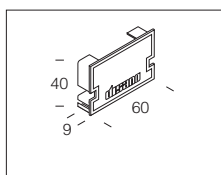
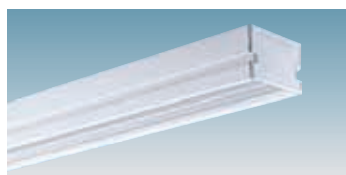
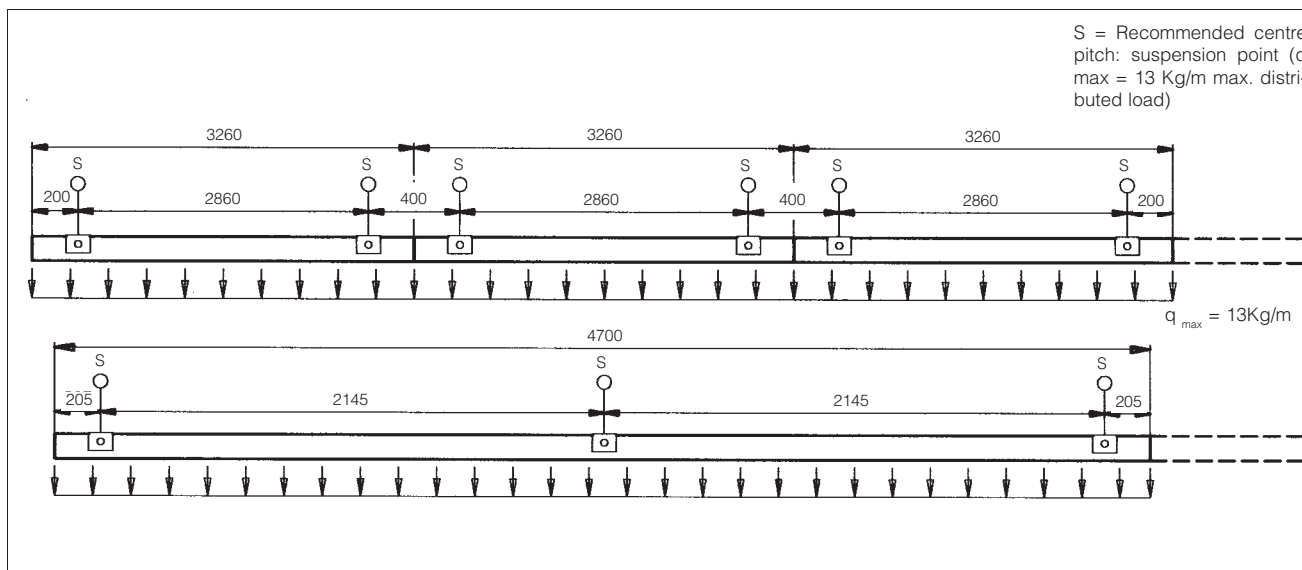


acc. 6052 chain suspension	
stainless steel	132928
In steel. For chain suspension. With track connection acc 6051. At least 2 pcs. per track.	

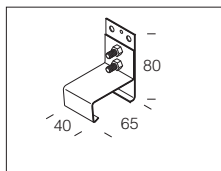
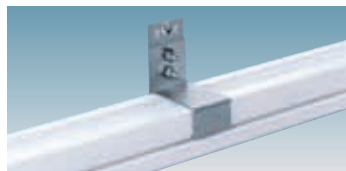


acc. 6053 wire suspension	
stainless steel	132929
In steel. For suspension with wire. With millimetric adjustment. Complete with acc 6051. Max load: 30 kg.	

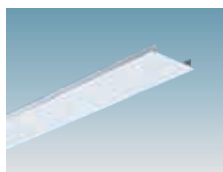
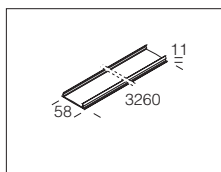
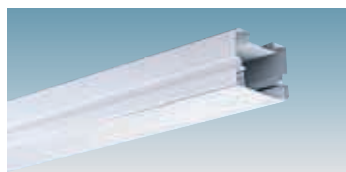




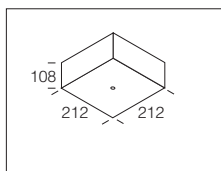
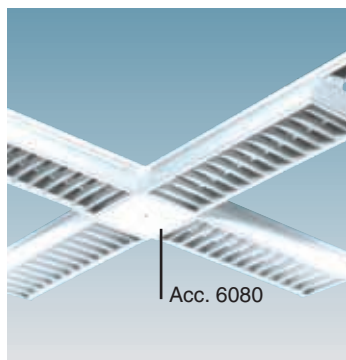
acc. 6045 end cap	
white	132909
Made of white thermoplastic material. Used to close the end section of track art. 6000.	



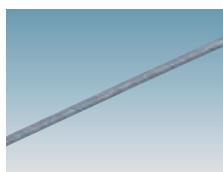
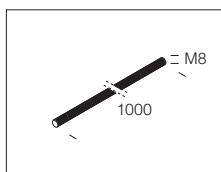
acc. 6050 wall bracket	
galvanized	132910
Zinc-plated steel bracket. For wall mounting of track art. 6000. 2 per pack.	



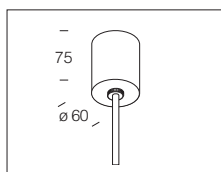
acc. 6005 cover	
white	132901
V0 self-extinguishing PVC. To cover track art. 6000.	



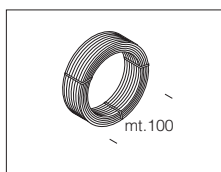
acc. 6080 cube	
white	132916
Made of steel. To avoid gaps in junctions or between Rapid System Series fixtures with reflector.	



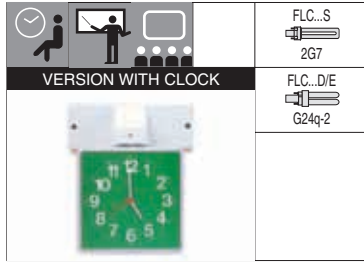
acc. 6095 threaded bar	
galvanized	132919
Made of galvanised steel. For suspension of alignment box acc 6080. To be used with acc 6090.	



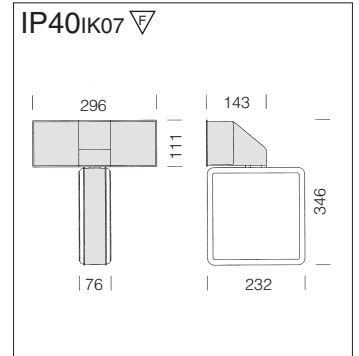
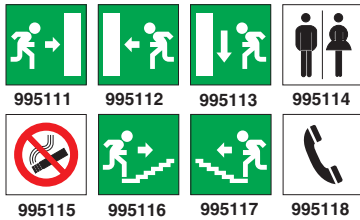
acc. 6090 ceiling rose	
black	132918
Made of black thermoplastic material; accessories included. For suspension of alignment box acc 6080. To be used with acc 6095.	



acc. 6512 wire	
steel	132930
Steel wire. To be used when installation requires a longer wire than the one supplied with acc. 6510.	



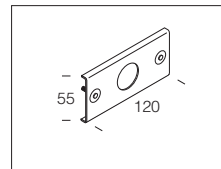
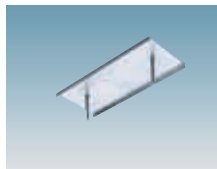
Pictogram stickers available:



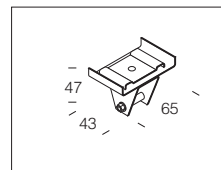
Housing: Vandal resistant, self-extinguishing, UV-stabilised RAL 7035 grey polycarbonate housing/louvre. Diffuser rotation: 0° to 330°. With emergency kit in maintained version and 60-minute Emergency run time. To be attached to acc. 6054 to track art. 6000. Supplied with pictogram and quartz clock.

626 Segno - clock or module with EM					
		CNL-E		CNL-E Auto-diagnosis	
wattage	colour	weight	code	weight	code
FLC1x11S/E	grey + clock	2.60	112550-00		
FLC1x18D/E	grey / neutral	2.50	112551-00	2.50	112551-0066

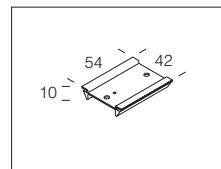
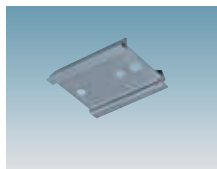
acc. 6054 bracket for Segno	
galvanized	132931
Made of galvanised steel. For mounting of art. 626 Segno.	



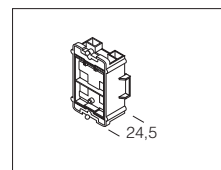
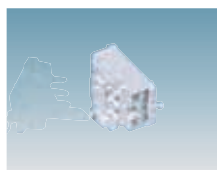
acc. 6037 suspension hook	
galvanized	132922
In zinc plated steel. Allows high bays to be fixed to track art. 6000. Max load: 20 kg.	



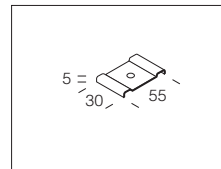
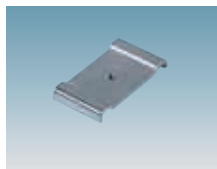
acc. 6030 support	
	132906
Knife switch support, for snap-on fastening on track art. 6000. To be also used as wire clip.	



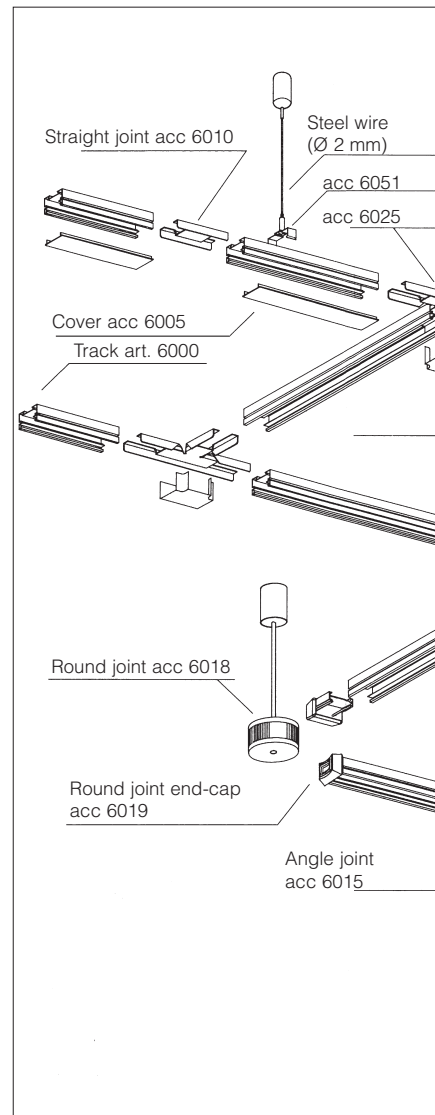
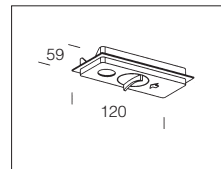
acc. 79 knife switch	
white	985005
For quick connection to the power line and for automatic power line cutoff during maintenance. To be used with acc 6030.	

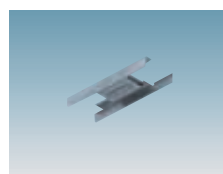
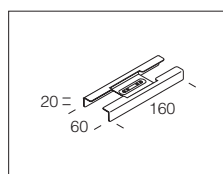
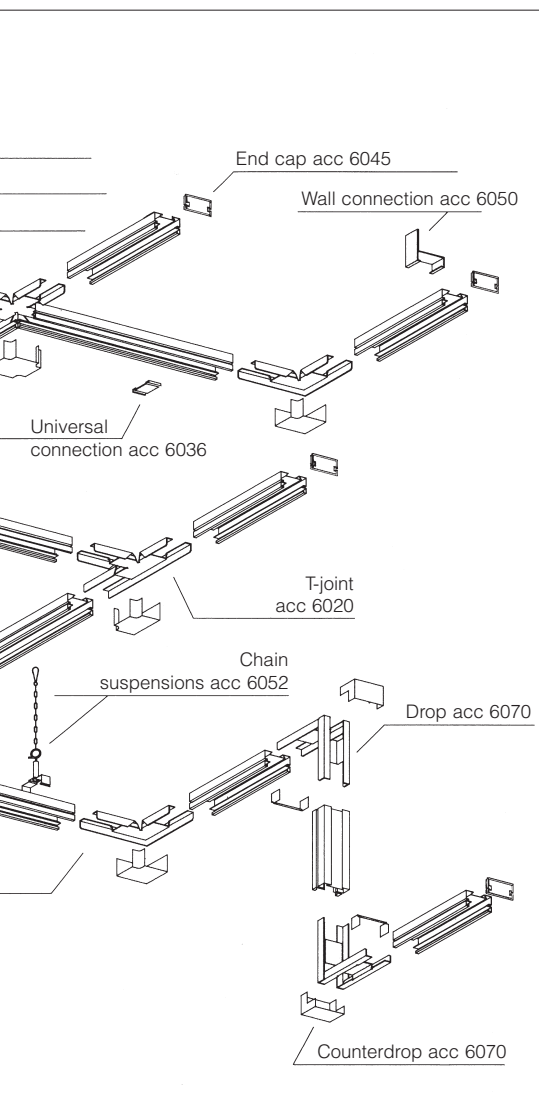
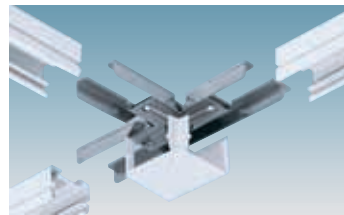
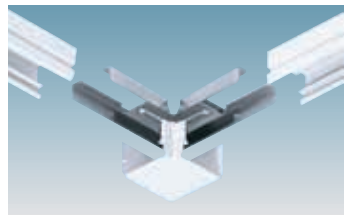
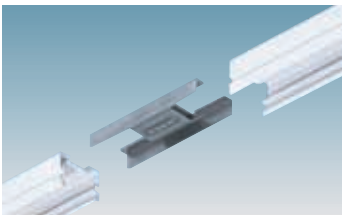


acc. 6036 universal connection	
galvanized	132987
Made of galvanised steel. To fasten waterproof fixtures on track art. 6000.	

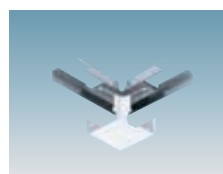
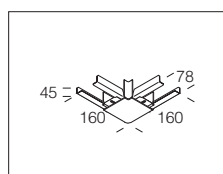


acc. 6099 connection box	
	132946
Self-extinguishing polycarbonate. For quick clipping to the track; to enable passage of electric power.	

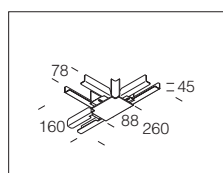




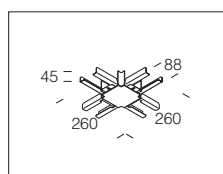
acc. 6010 straight joint	
132902	
Made of galvanised steel . For alignment of 2 tracks art. 6000.	



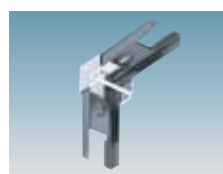
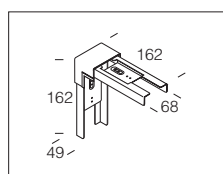
acc. 6015 angle joint	
white	132903
Made of galvanised steel with a white thermoplastic material cover. For "L"- jointing of 2 tracks art. 6000.	



acc. 6020 T joint	
white	132904
Made of galvanised steel with a white thermoplastic material cover. For jointing of 3 tracks art. 6000.	



acc. 6025 cross joint	
white	132905
Made of galvanised steel with a white thermoplastic material cover. For the jointing of 2/3/4 tracks art. 6000.	



acc. 6070 drop-counterdrop	
white	132914
Zinc plated steel joint with white thermoplastic material cover. To change the installation level of track art. 6000.	