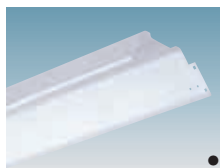
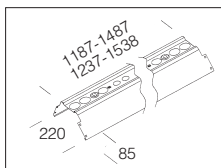
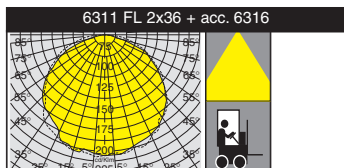
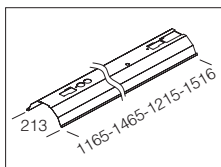


Made of steel, pre-painted white with polyester resin, stabilized to UV; for one or two lamp.



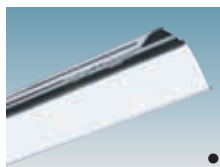
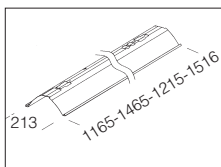
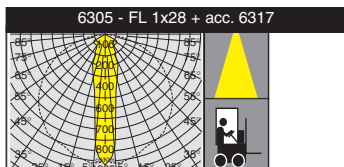
<b>acc. 6316 wide beam reflector</b>	
28/54	237410
36	237411
35/49/80	237412
58	237413
On request: reflector externally painted in grey RAL 7001.	

In high-gloss aluminium



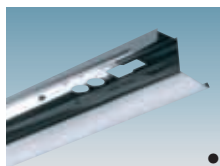
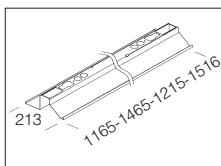
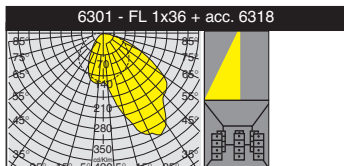
<b>acc. 6321 wide beam reflector</b>	
28/54	237426
36	237427
35/49/80	237428
58	237429
To be used with acc. 6316.	

Polished high-gloss aluminium. For one lamp only.



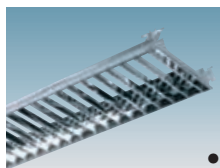
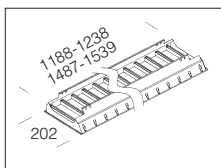
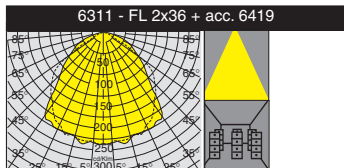
<b>acc. 6317 narrow-beam reflector</b>	
28/54	237414
36	237415
35/49/80	237416
58	237417
To be used with acc. 6316.	

Polished high-gloss aluminium. For one lamp only.



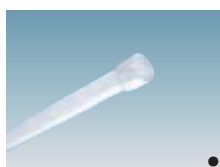
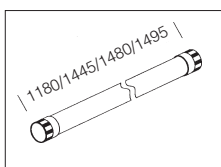
<b>acc. 6318 asymmetrical reflector</b>	
28/54	237418
36	237419
35/49/80	237420
58	237421
To be used with acc. 6316.	

Polished high-gloss aluminium. For one or two lamp.

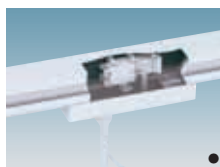
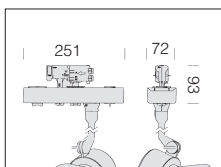


<b>acc. 6319 louvre</b>	
28/54	237422
36	237423
35/49/80	237424
58	237425
To be used with acc. 6316.	

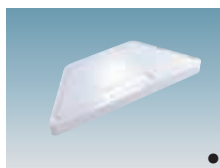
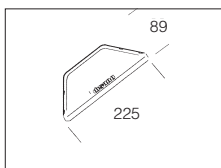
Scored inside, smooth, dustproof outside V2 polycarbonate.



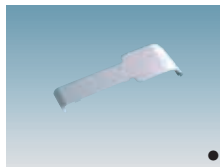
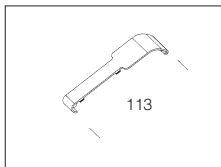
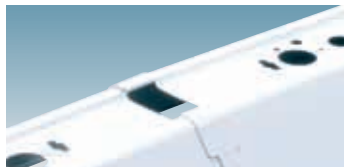
<b>acc. 6410 protective tube</b>	
1/2x36	237607
1/2x58	237608
1/2x35/49/80	237615
1/2x28/54	237614



<b>acc. 6324 wall mounting unit</b>	
white	237437
Die-cast aluminium spotlight holder box, painted white. To install Fosnova Vision series floodlights.	



<b>acc. 6323 end cap</b>	
white	237436
Made of thermoplastic material. To close optical diffusing. <b>2 per pack</b>	



<b>acc. 6320 cover</b>	
white	237430
Made of thermoplastic material. To use in order to join together the optical diffusing in the case of assembly in continuous row. <b>2 per pack</b>	