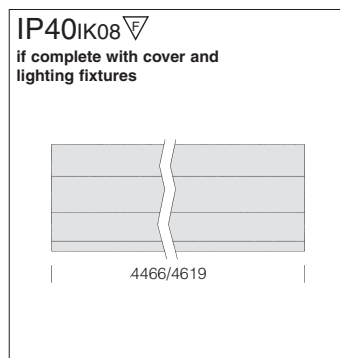
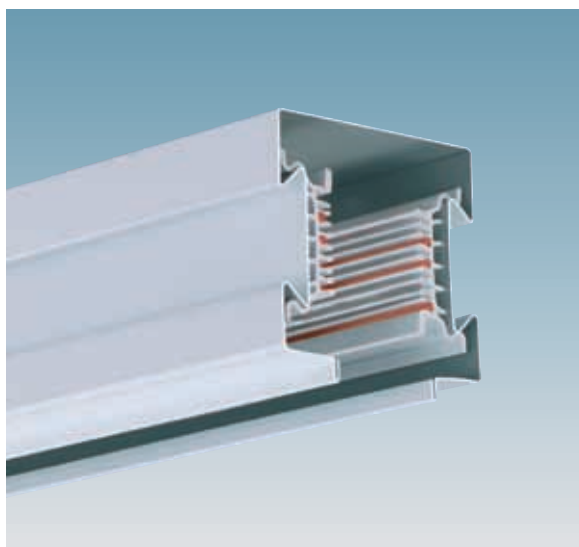


On request:
grey track RAL
7001.



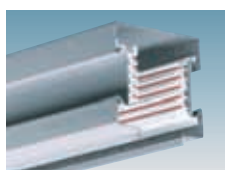
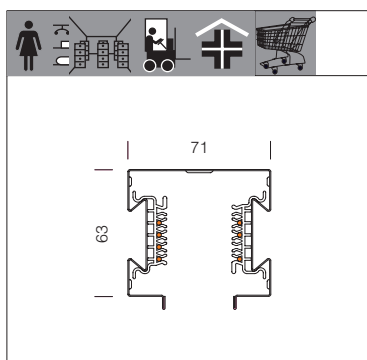
IP40IK08
if complete with cover and
lighting fixtures

Track housing: painted rolled steel with rounded edges for hand safety and galvanised steel previously stove-enamelled with a UV-stabilised, anti-yellowing white polyester resin applied after phosphate treatment.

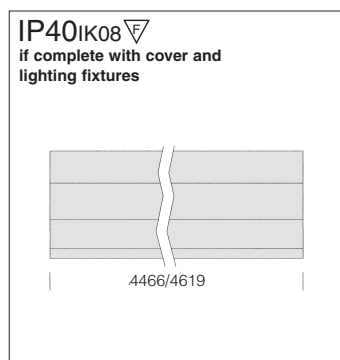
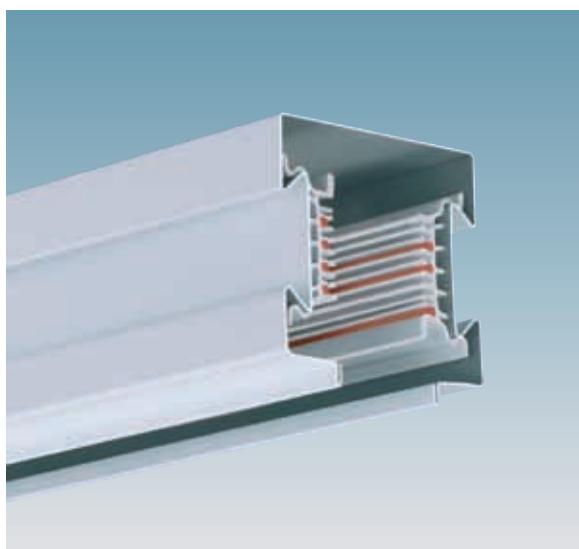
6101 Elesystem - track 5 circuit				
		S		
Length mm	colour	weight	code	
4466	white	6.70	132835-00	L= 4466: ideal for continuous lines with 1489 mm T5 ceiling fixtures.
4619	white	6.90	132836-00	L= 4619: ideal for continuous lines of 1540 mm T8 ceiling fixtures.

Conductors: tin-plated copper conductors for aggressive environments and atmospheres.

Regulations: Manufactured in compliance with EN60598 - CEI 34 - 21 standards. The level of protection complies with the EN60529 standard.



On request:
grey track RAL
7001.



IP40IK08
if complete with cover and
lighting fixtures

Track housing: painted rolled steel with rounded edges for hand safety and galvanised steel previously stove-enamelled with a UV-stabilised, anti-yellowing white polyester resin applied after phosphate treatment.

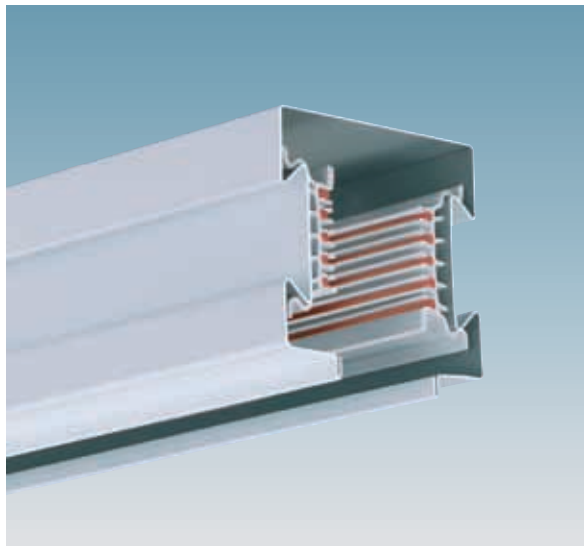
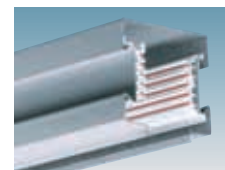
6102 Elesystem - track 7 circuit				
		S		
Length mm	colour	weight	code	
4466	white	6.70	132837-00	L= 4466: ideal for continuous lines with 1489 mm T5 ceiling fixtures.
4619	white	6.90	132838-00	L= 4619: ideal for continuous lines of 1540 mm T8 ceiling fixtures.

Conductors: tin-plated copper conductors for aggressive environments and atmospheres.

Regulations: Manufactured in compliance with EN60598 - CEI 34 - 21 standards. The level of protection complies with the EN60529 standard.

IP40IK08
if complete with cover and lighting fixtures

4466/4619

On request:
grey track RAL
7001.

Track housing: painted rolled steel with rounded edges for hand safety and galvanised steel previously stove-enamelled with a UV-stabilised, anti-yellowing white polyester resin applied after phosphate treatment.

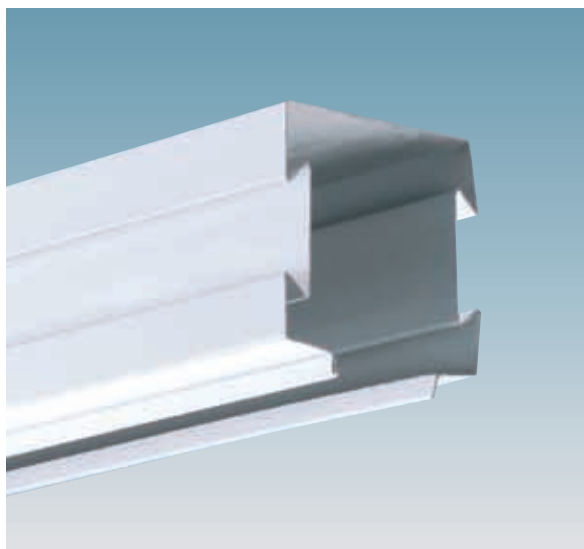
Conductors: tin-plated copper conductors for aggressive environments and atmospheres.

Regulations: Manufactured in compliance with EN60598 - CEI 34 - 21 standards. The level of protection complies with the EN60529 standard.

6100 Elesystem - track 10 circuit				
		S		
Length mm	colour	weight	code	
4466	white	6.70	132800-00	L= 4466: ideal for continuous lines with 1489 mm T5 ceiling fixtures.
4619	white	6.90	132801-00	L= 4619: ideal for continuous lines of 1540 mm T8 ceiling fixtures.

IP40IK08

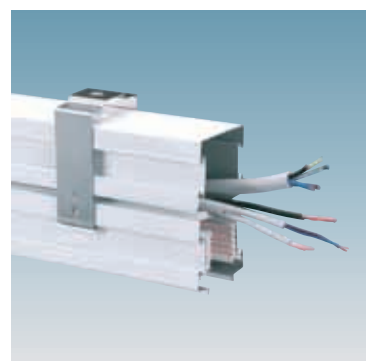
4466/4619



Wiring-free channel to be used as a through passage for cables and utilities together with accessory 6111.

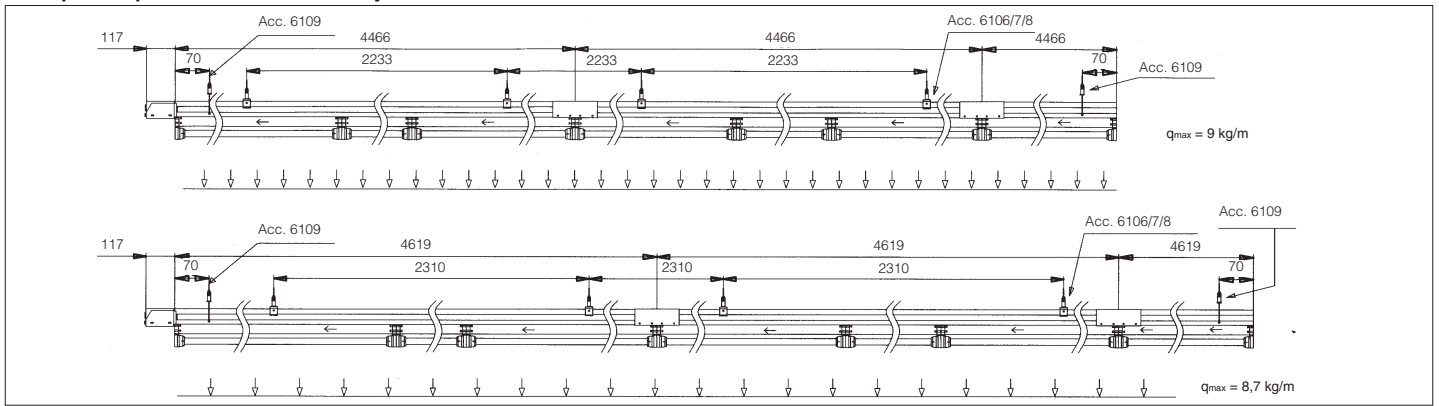
On request: in grey RAL 7001 colour.

6100 Elesystem - Wiring-free track				
		S		
Length mm	colour	weight	code	
4466	white	6.00	132800-03	
4619	white	6.00	132801-03	

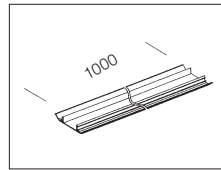
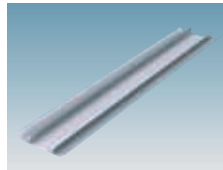


Example to accommodate various types of cables.

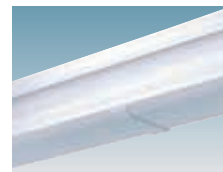
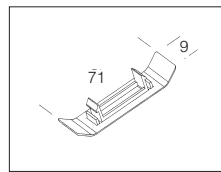
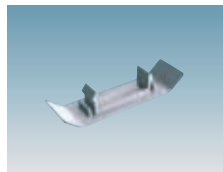
Example suspension + channel Elesystem T5/T8



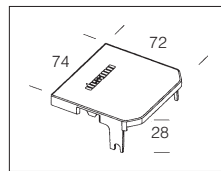
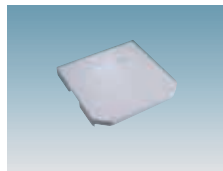
acc. 6112 cover	
white	132814
In PVC. To cover the track guaranteeing IP40 rating.	



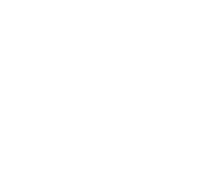
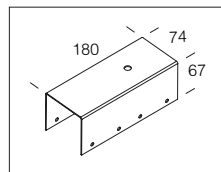
acc. 6113 joint/cover	
white	132818
In thermoplastic material. To join the track cover and guarantee IP40 rating.	



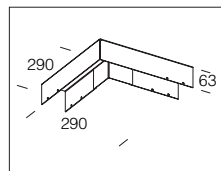
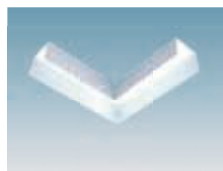
acc. 6322 end cap	
white	237435
In thermoplastic material. To close the track guaranteeing IP40 rating.	



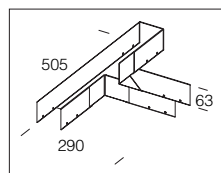
6122 linear joint	
white	132827
White colour, powder painted sheet metal. For linear connection.	



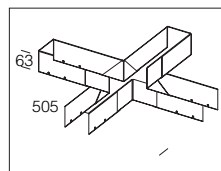
acc. 6123 "L" joint	
white	132828
White colour, powder painted sheet metal. For "L" connection.	



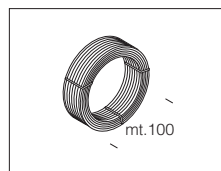
acc. 6124 "T" joint	
white	132829
White colour, powder painted sheet metal. For "T" connection.	

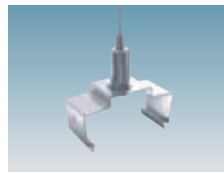
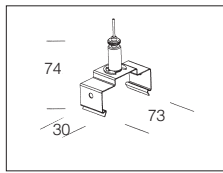
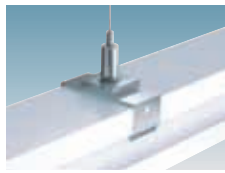
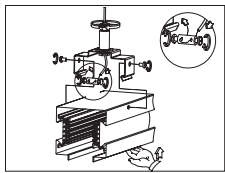


acc. 6125 "X" joint	
white	132830
White colour, powder painted sheet metal. For "X" connection.	

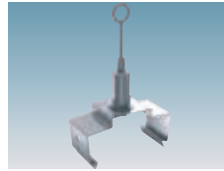
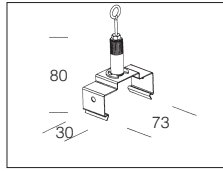
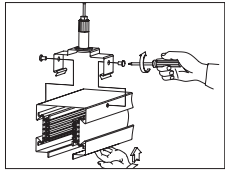


acc. 6512 wire	
steel	132930
Steel wire ø 2 mm. To be used with suspension with acc. 6106.	

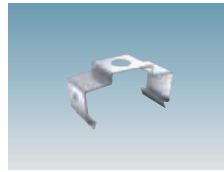
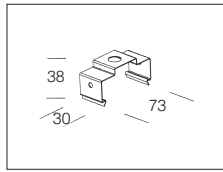
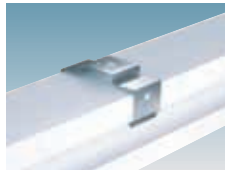
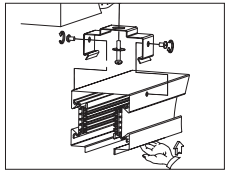




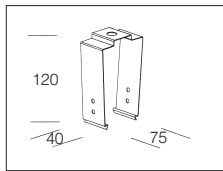
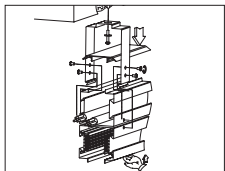
acc. 6106 wire suspension	
stainless steel	132811
In stainless steel, for suspension with steel cable. Fitted with millimeter adjustment and safety screws. Maximum load 20kg.	



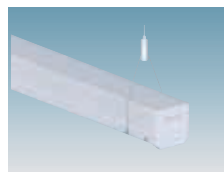
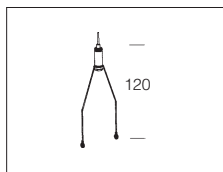
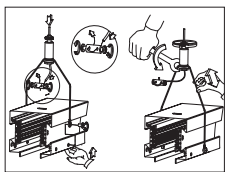
acc. 6107 chain suspension	
stainless steel	132812
Suspension by chain - In stainless steel, for suspension with steel chain. Fitted with millimeter adjustment device and safety screws. Maximum load 30kg.	



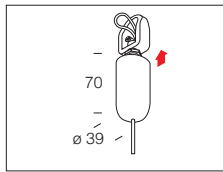
acc. 6108 simple suspension	
stainless steel	132813
Simple suspension - In stainless steel, for suspension from ceilings. Maximum load 30kg.	



acc. 6111 double suspension	
stainless steel	132816
In stainless steel, for suspension from ceilings when the track is double. Maximum load 30Kg.	



acc. 6109 cap suspension	
steel	132815
Suspension device to be used at the ends of the Elesystem track when it is installed in continuous lines to prevent any twisting.	



acc. 6510 suspension	
white	993914
Suspension supplied with Ø 2 mm steel wire, 1.5 m long. Max load: 30 kg. To suspend acc 6106.	

- Accessories suitable for suspending mechanical and electrical equipment: easy to use and to install, no tools required. Self-locking and economic.
- **Quick:** The application speed has shown that installation times can be reduced by one 6th.
 - **Versatile:** can be suspended vertically, at any angle compared to the attached object.
 - **Easy:** Sections of prepared cable are supplied as a standard feature with lengths between 1 to 10 m. The installation can be completed by inexperienced installers and does not require tools
 - **Elegant:** Reduces the need to have supplementary load-bearing components and blends well with the environment, in particular where the utilities are in view.



The ring-shaped device provides an extremely quick method to fix the support to an existing structure.



acc. 6126 ring-shaped device	
steel	132831
Cable length: 10 m.	

The articulated terminal that uses a sealing plate and a stop terminal provides to fix the device to a ready-made or punched hole.



acc. 6127 articulated terminal	
steel	132832
Cable length: 10 m. Ideal for installation on metal or steel sheets with a hole on the sealing side.	

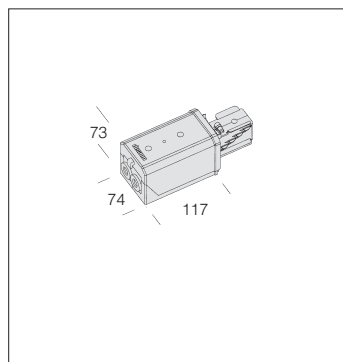
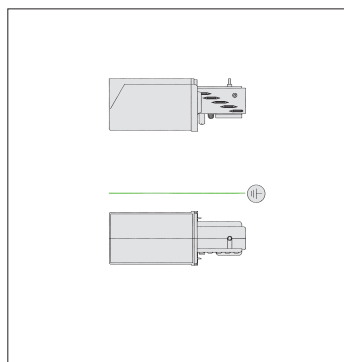
The screw device provides an extremely quick method to anchor the support to a concrete structure.



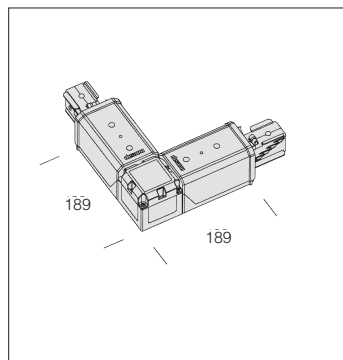
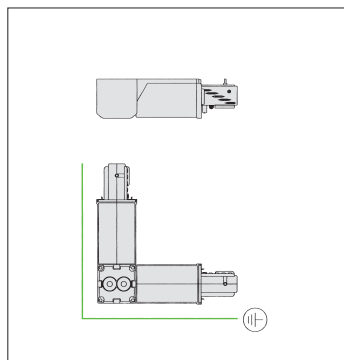
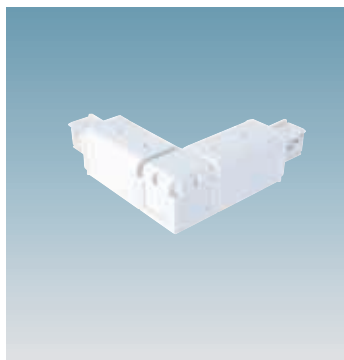
acc. 6128 screw device	
steel	132833
Maximum load-bearing capacity: 45 kg. Thread: ø 6 mm (M8). Cable length: 20 m.	



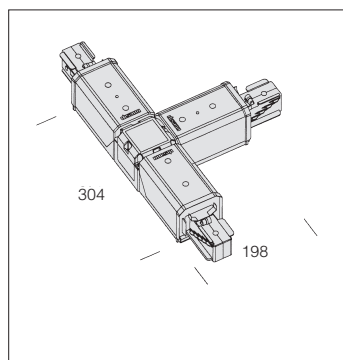
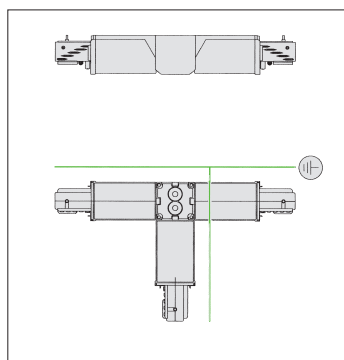
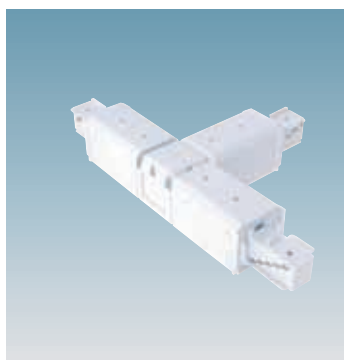
Channel accessories: all accessories are available in grey RAL 7001.



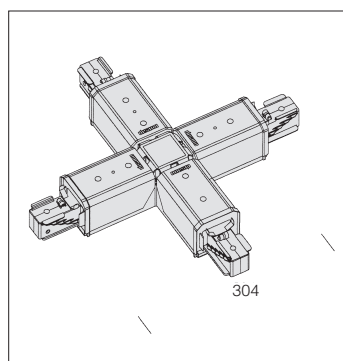
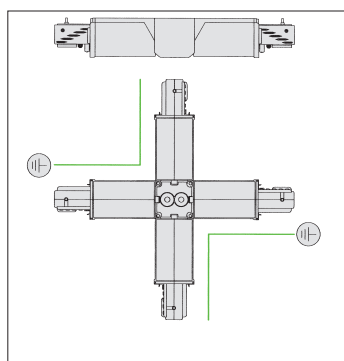
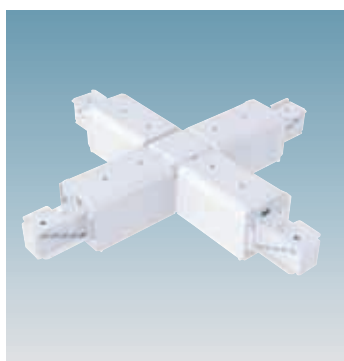
acc. 6105 power supply	
white	132810
Nylon with phosphorous bronze contacts. To be used for track power supply at all times. Maximum allowed lead cross-section: mm 2,5 sqmm. On request: reversed power connector.	



acc. 6116 "L" joint - right	
white	132821
Nylon with phosphorous bronze contacts. For angle-shaped and electric connection. Cables may enter directly at junction cubes through rubber grommets.	

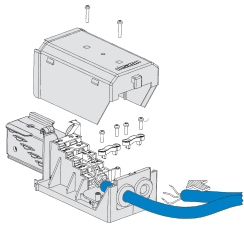


acc. 6117 "T" joint - right	
white	132823
Nylon with phosphorous bronze contacts. For T-shaped and electric connection. Cables may enter directly at junction cubes through rubber grommets.	

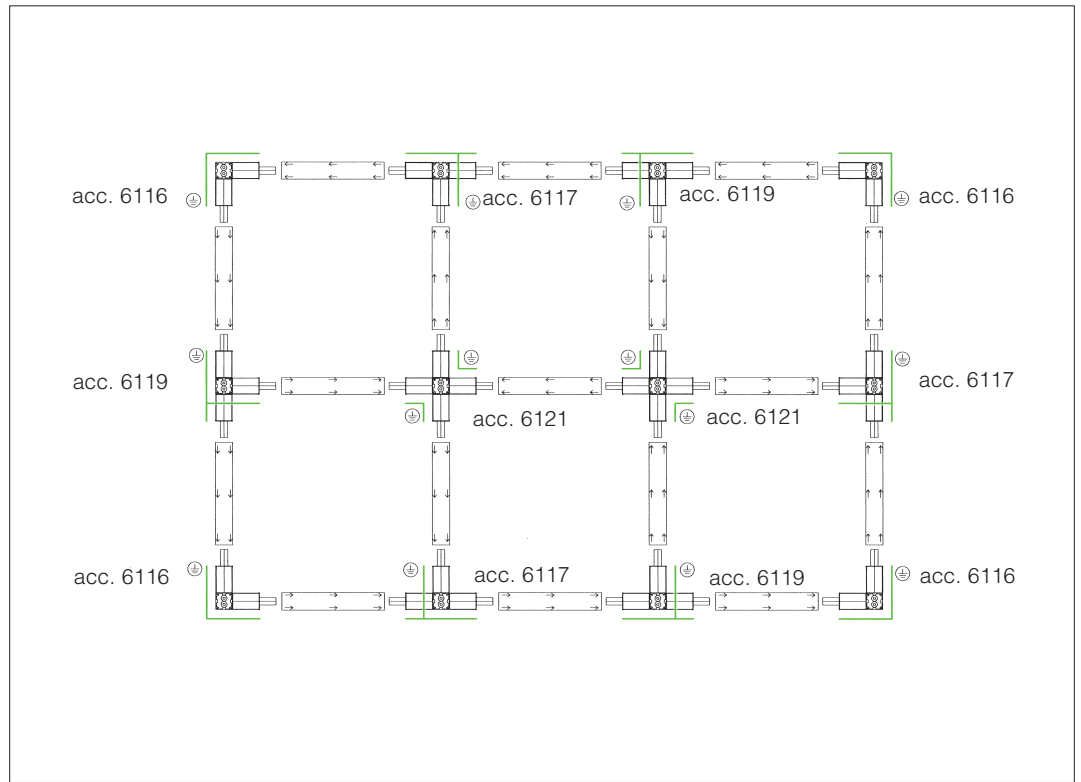
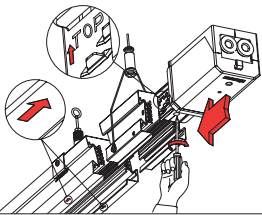


acc. 6121 "X" joint	
white	132826
In nylon with phosphorous bronze contacts. For angle and electrical connections. Cables may enter directly at junction cubes through rubber grommets.	

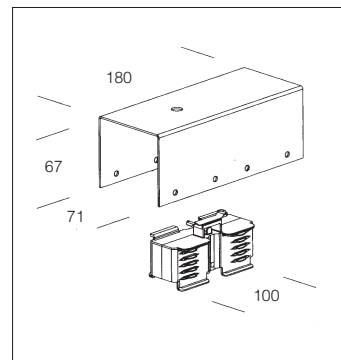
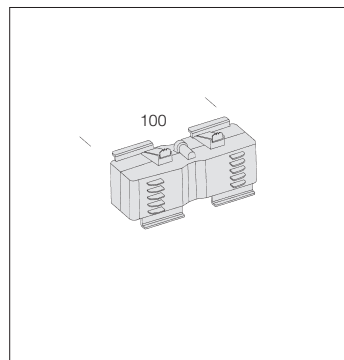
To power the track. Maximum allowed lead cross-section: 2.5 sqmm. Power supply equipped with ground, 3 phases, 1 neutral for traditional power supply, 1 neutral and one live for EM power supply, + and - for dimmer line, 1 free lead for special applications (e.g.: for the Dali self-diagnosis line + and - lines must be used).



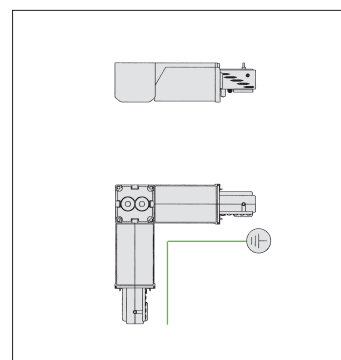
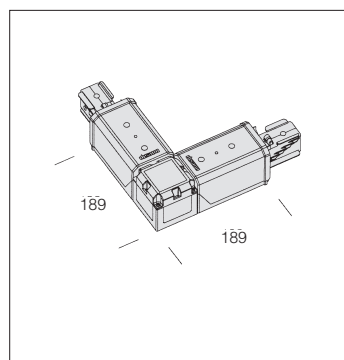
Indicating "arrow" to ensure a correct installation position.



acc. 6115 electric joint	
white	132820
Nylon with phosphorous bronze contacts. Supplied with mechanical linear joint to provide strength and IP40 degree of protection.	



acc. 6118 "L" joint - left	
white	132822
Nylon with phosphorous bronze contacts. For angle-shaped and electric connection. Cables may enter directly at junction cubes through rubber grommets.	



acc. 6119 "T" joint - left	
white	132824
Nylon with phosphorous bronze contacts. For T-shaped and electric connection. Cables may enter directly at junction cubes through rubber grommets.	

